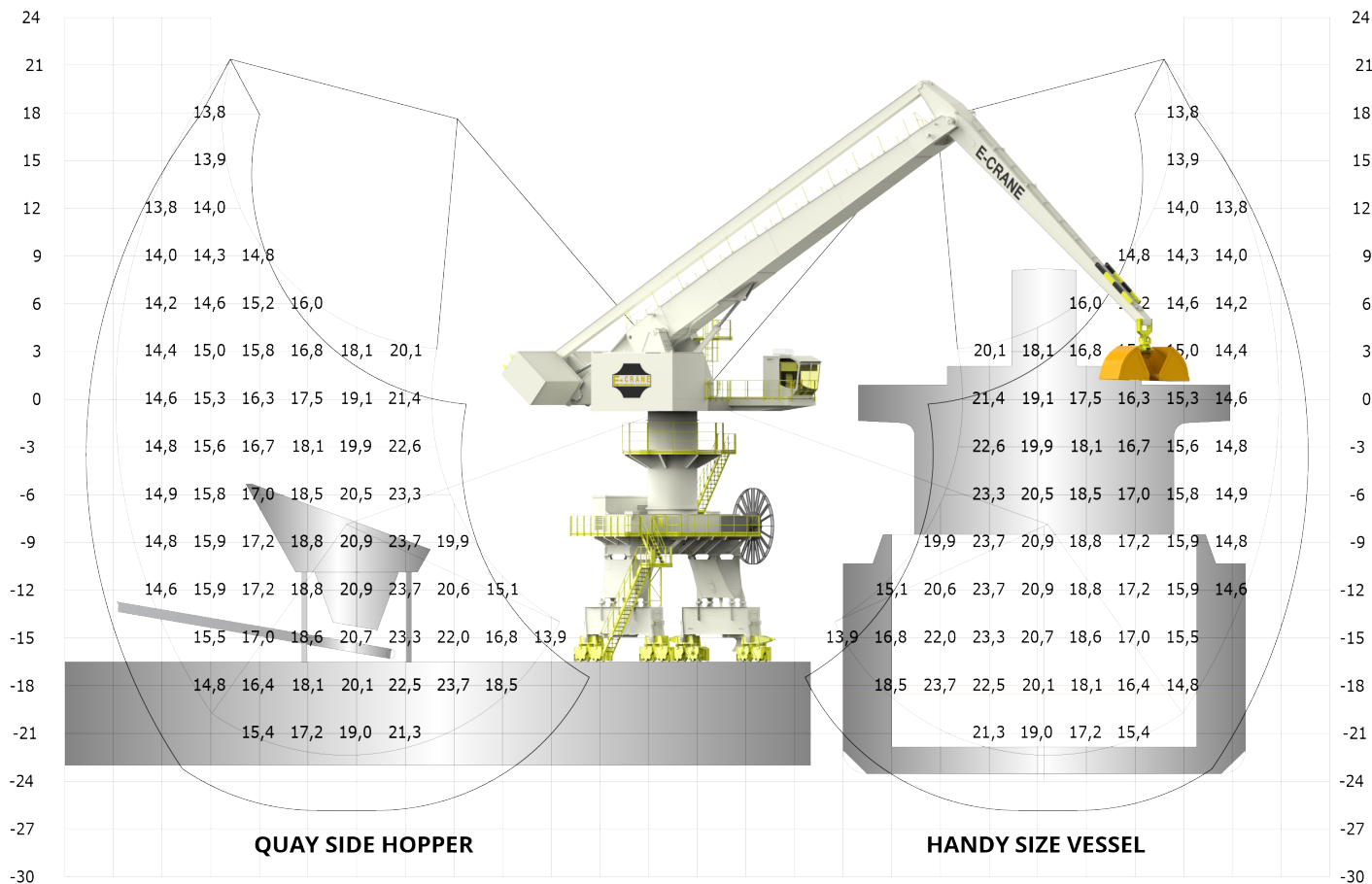


# EH9359



### LIFTING CAPACITY

Grab Operation (ISO 10567) ..... max 25,8 t

### MAIN DIMENSIONS

Boom Length ..... 23,0 m  
 Stick Length ..... 14,5 m  
 Main Pivot Height (typical) ..... 16,5 m

### WEIGHT

Upper Revolving Frame ..... 165 t  
 Pedestal (Fixed & Free Standing) ..... 25 to 31 t  
 High Portal Crawler ..... 126,7 t

### WORKING AREA

Max. Outreach ..... 35,9 m  
 Min. Outreach ..... 8,5 m  
 Lifting Height ..... 45,0 m

### TRANSLOADING CAPACITY (GRAB OPERATION)

Crane Cycles ..... Up to 100 cycles/hour  
 Best Daily Production ..... Up to 12.000 t/day  
 Peak Performance ..... 1.000 t/hour

### COMPONENT SELECTION

#### MAIN ELECTRICAL MOTOR

Nominal Output ..... 250 kW/335 hp - 50Hz  
 Main Power Supply ..... 400 VAC. 3 phase

#### LOAD SENSING HYDRAULIC SYSTEM

Main Implement Pumps ..... 884 l/min  
 Max. Pressure ..... 300 bar  
 Swing Pump ..... Closed Loop. 434 l/min  
 Hydr. Tank Volume ..... 1.850 l

#### HYDRAULIC CYLINDERS

2 Identical Cylinders ..... Bore 280 mm

#### SWING SYSTEM

Swing Bearing ..... 3 Row Roller Bearing w. Int Gear  
 Diameter ..... 2.645 mm  
 Swing Speed ..... 2.3 RPM  
 Max. Pressure ..... 275 bar  
 Swing Torque ..... 759 kNm

#### OPERATOR'S CAB

Operator's Cab ..... Galaxy Cab  
 Main Dimensions LxWxH 2.700 x 1.870 x 2.440 mm