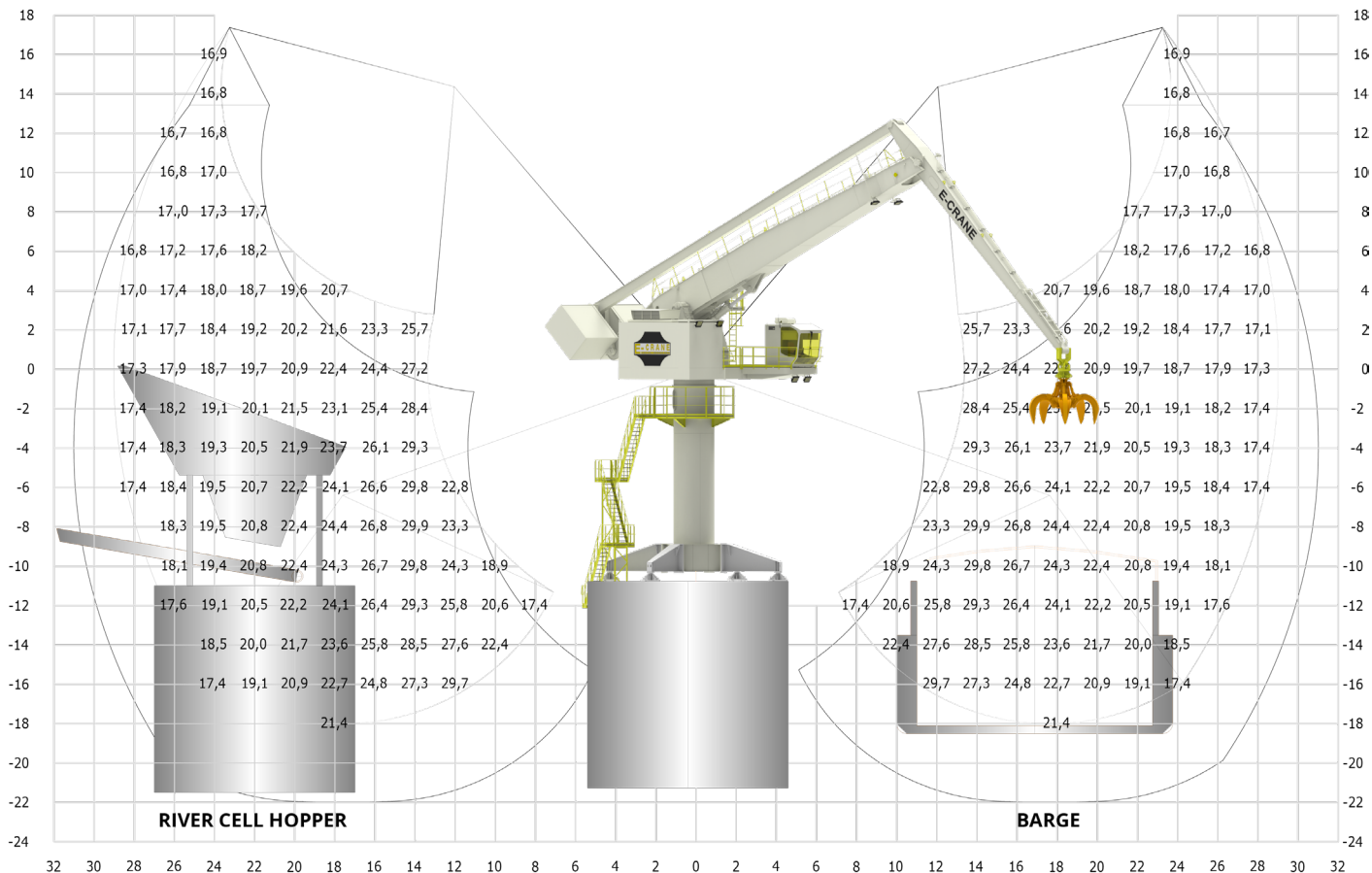


EH10290



LIFTING CAPACITY

Grab Operation (ISO 10567) max 29,9 t

MAIN DIMENSIONS

Boom Length 18,8 m
 Stick Length 11,6 m
 Main Pivot Height (typical) 13,0 m

WEIGHT

Upper Revolving Frame 152 t
 Pedestal (Fixed & Free Standing) 17 to 23 t
 High Portal Crawler 119,0 t

WORKING AREA

Max. Outreach 29,0 m
 Min. Outreach 4,5 m
 Lifting Height 39,0 m

TRANSLOADING CAPACITY (GRAB OPERATION)

Crane Cycles Up to 100 cycles/hour
 Best Daily Production Up to 12.000 t/day
 Peak Performance 1.000 t/hour

COMPONENT SELECTION

MAIN ELECTRICAL MOTOR

Nominal Output 250 kW/335 hp - 50Hz
 Main Power Supply 400 VAC. 3 phase

LOAD SENSING HYDRAULIC SYSTEM

Main Implement Pumps 884 l/min
 Max. Pressure 300 bar
 Swing Pump Closed Loop. 434 l/min
 Hydr. Tank Volume 1.850 l

HYDRAULIC CYLINDERS

2 Identical Cylinders Bore 280 mm

SWING SYSTEM

Swing Bearing 3 Row Roller Bearing w. Int Gear
 Diameter 2.645 mm
 Swing Speed 2.3 RPM
 Max. Pressure 275 bar
 Swing Torque 525 kNm

OPERATOR'S CAB

Operator's Cab Galaxy Cab
 Main Dimensions LxWxH 2.700 x 1.870 x 2.440 mm