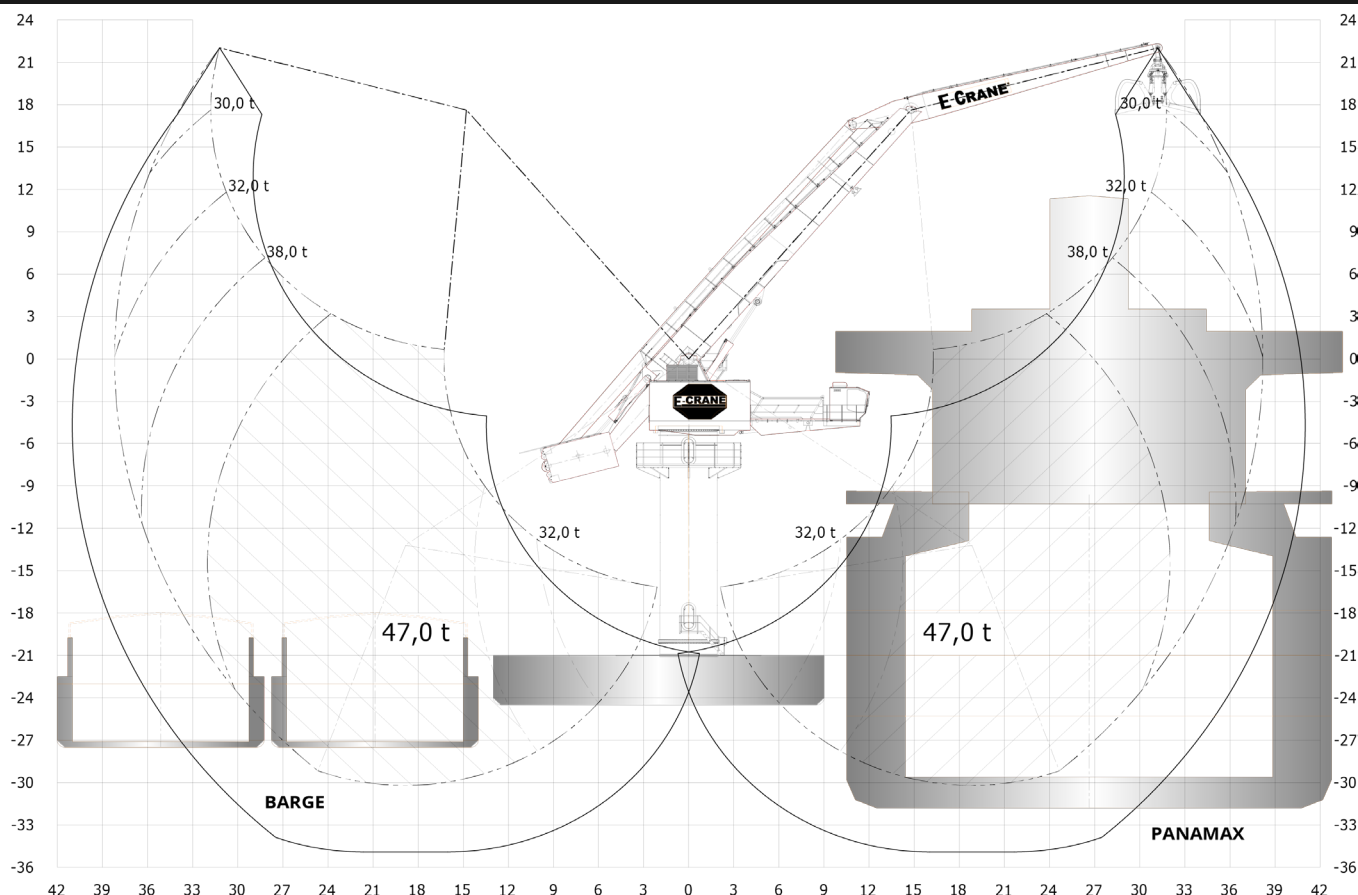


EC30382



LIFTING CAPACITY (FEM 1.001)

Grab Operation	max 47,0 t
Lift Operation	max 58,0 t

MAIN DIMENSIONS

Boom Length	23,0 m
Stick Length	17,0 m
Main Pivot Height (typical)	20,0 m

WEIGHT

Upper Revolving Frame	375 t
Pedestal (Fixed & Free Standing)	47 to 59 t
High Portal Crawler	232,8 t

WORKING AREA

Max. Outreach	38,2m
Min. Outreach	2,1 m
Lifting Height	52,2 m

TRANSLOADING CAPACITY
 Contact your local agent or sales@e-crane.com for detailed calculations.

COMPONENT SELECTION

Nominal Output	630 kW/845 hp - 50Hz
Main Power Supply	400 VAC. 3 phase
LOAD SENSING HYDRAULIC SYSTEM	
Main Implement Pumps	1807 l/min
Max. Pressure	300 bar
Swing Pump	Closed Loop. 434 l/min
Hydr. Tank Volume	4.000 l
5 Identical Cylinders Bore 330 mm	
Swing Bearing 3 Row Roller Bearing w. Int Gear	
Diameter	3.768 mm
Swing Speed	1.3 RPM
Max. Pressure	275 bar
Swing Torque	1982 kNm
Operator's Cab Galaxy Cab	
Main Dimensions LxWxH	2.700 x 1.870 x 2.440 mm