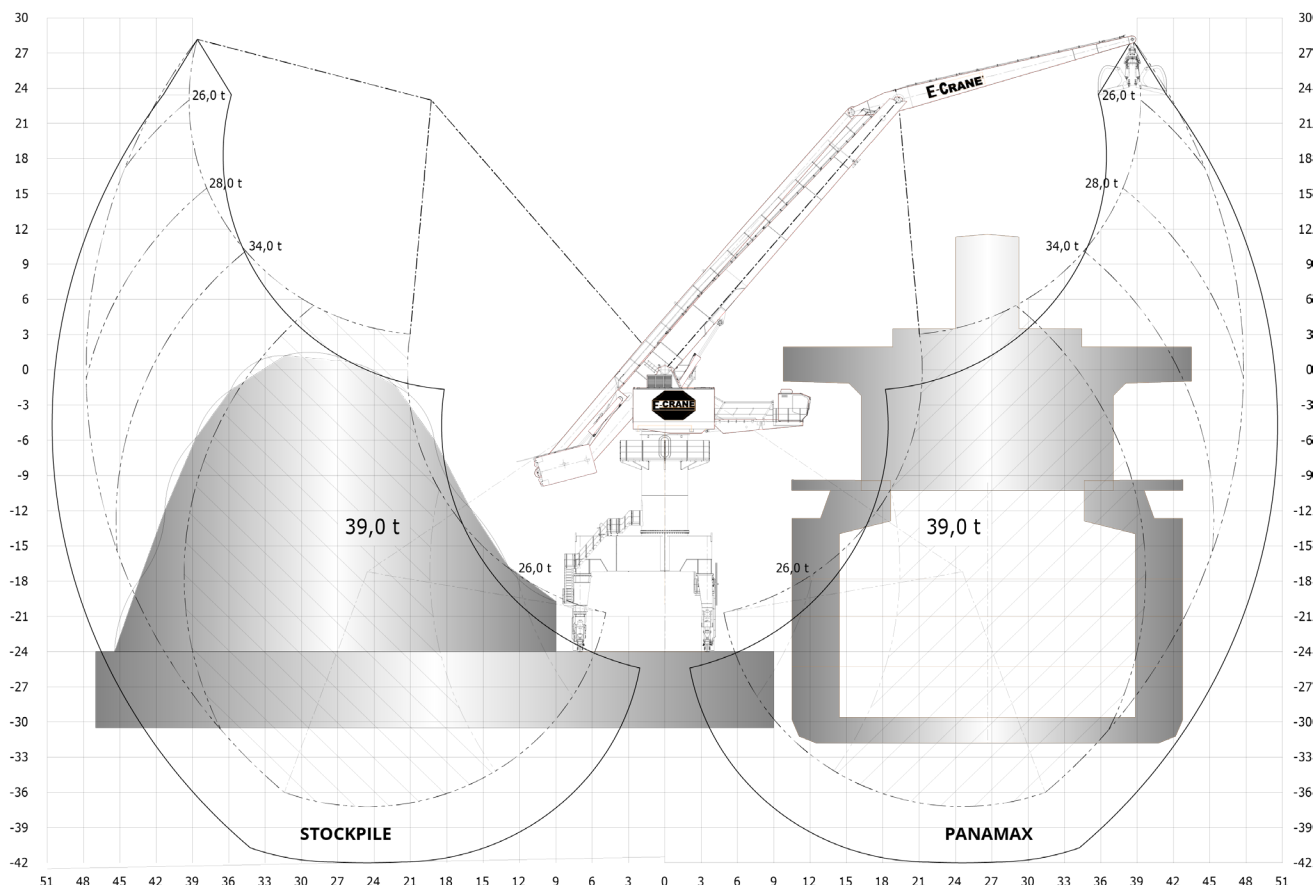


EC26478



LIFTING CAPACITY (FEM 1.001)

Grab Operation max 39,0 t
 Lift Operation max 47,0 t

MAIN DIMENSIONS

Boom Length 30,0 m
 Stick Length 20,0 m
 Main Pivot Height (typical) 24,0 m

WEIGHT

Upper Revolving Frame 431 t
 Pedestal (Fixed & Free Standing) 51 to 63 t
 High Portal Crawler 236,8 t

WORKING AREA

Max. Outreach 47,8 m
 Min. Outreach 4,8 m
 Lifting Height 65,3 m

TRANSLOADING CAPACITY

Contact your local agent or sales@e-crane.com for detailed calculations.

COMPONENT SELECTION

MAIN ELECTRICAL MOTOR

Nominal Output 630 kW/845 hp - 60 Hz
 Main Power Supply 400 VAC. 3 phase

LOAD SENSING HYDRAULIC SYSTEM

Main Implement Pumps 1807 l/min
 Max. Pressure 300 bar
 Swing Pump Closed Loop. 434 l/min
 Hydr. Tank Volume 4.000 l

HYDRAULIC CYLINDERS

5 Identical Cylinders Bore 330 mm

SWING SYSTEM

Swing Bearing 3 Row Roller Bearing w. Int Gear
 Diameter 3.768 mm
 Swing Speed 1.3 RPM
 Max. Pressure 275 bar
 Swing Torque 1982kNm

OPERATOR'S CAB

Operator's Cab Galaxy Cab
 Main Dimensions LxWxH 2.700 x 1.870 x 2.440 mm