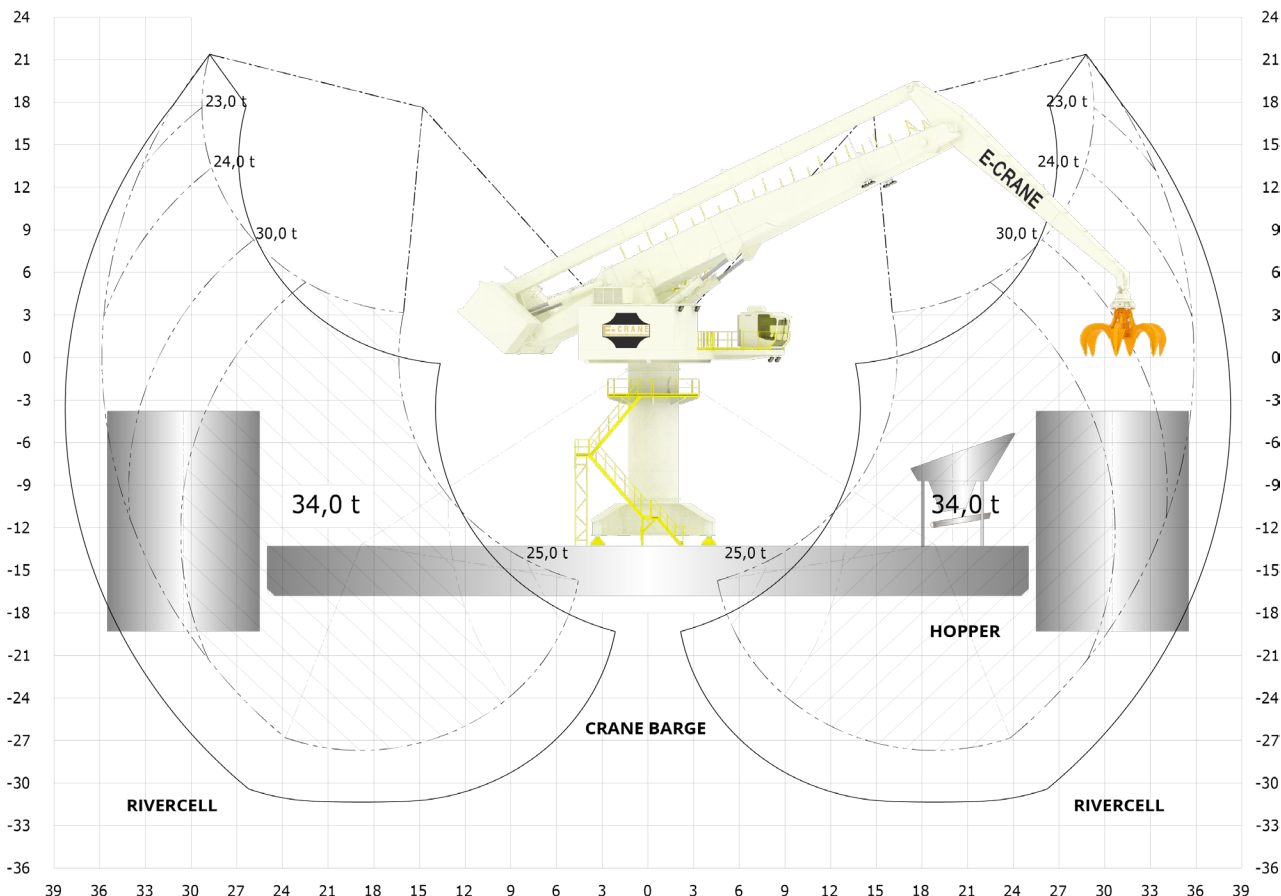


# EC23359



## LIFTING CAPACITY (FEM 1.001)

Grab Operation ..... max 34,0 t  
 Lift Operation ..... max 42,0 t

## MAIN DIMENSIONS

Boom Length ..... 23,0 m  
 Stick Length ..... 14,5 m  
 Main Pivot Height (typical) ..... 20,0 m

## WEIGHT

Upper Revolving Frame ..... 303 t  
 Pedestal (Fixed & Free Standing) ..... 39 to 48 t  
 High Portal Crawler ..... 206,6 t

## WORKING AREA

Max. Outreach ..... 35,9 m  
 Min. Outreach ..... 2,1 m  
 Lifting Height ..... 52,2 m

## TRANSLOADING CAPACITY

Contact your local agent or [sales@e-crane.com](mailto:sales@e-crane.com) for detailed calculations.

## COMPONENT SELECTION

Nominal Output ..... 630 kW/845 hp - 50Hz  
 Main Power Supply ..... 400 VAC. 3 phase

### LOAD SENSING HYDRAULIC SYSTEM

Main Implement Pumps ..... 1807 l/min  
 Max. Pressure ..... 300 bar  
 Swing Pump ..... Closed Loop. 434 l/min  
 Hydr. Tank Volume ..... 4.000 l

4 Identical Cylinders ..... Bore 330 mm

Swing Bearing ..... 3 Row Roller Bearing w. Int Gear  
 Diameter ..... 3.119 mm  
 Swing Speed ..... 1.6 RPM  
 Max. Pressure ..... 275 bar  
 Swing Torque ..... 1640 kNm

Operator's Cab ..... Galaxy Cab  
 Main Dimensions LxWxH 2.700 x 1.870 x 2.440 mm