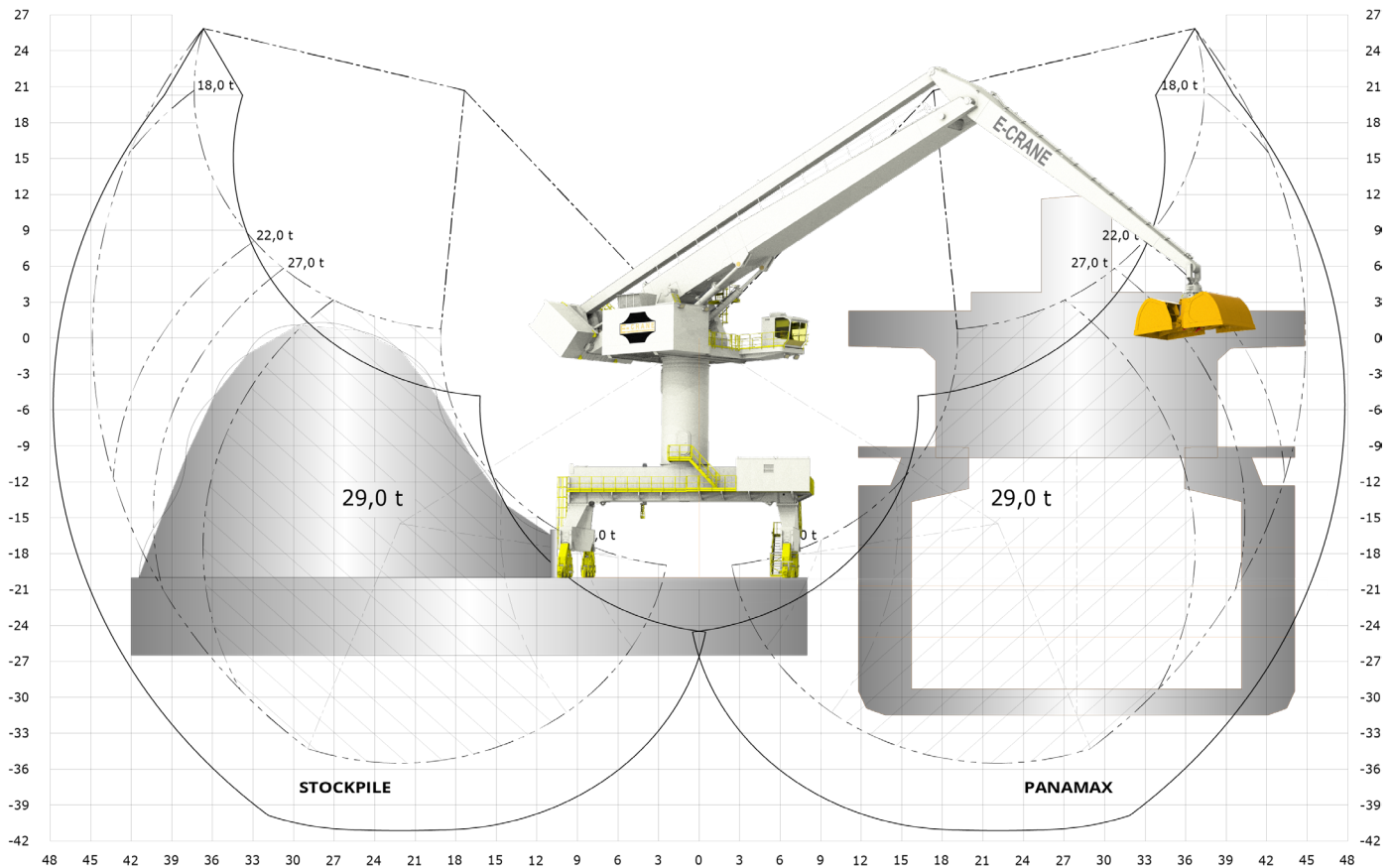


EC18450



LIFTING CAPACITY (FEM 1.001)

Grab Operation max 29,0 t
 Lift Operation max 35,0 t

MAIN DIMENSIONS

Boom Length 27,0 m
 Stick Length 20,0 m
 Main Pivot Height (typical) 20,0 m

WEIGHT

Upper Revolving Frame 341 t
 Pedestal (Fixed & Free Standing) 39 to 48 t
 High Portal Crawler 206,6 t

WORKING AREA

Max. Outreach 45,0 m
 Min. Outreach 2,4 m
 Lifting Height 61,3 m

TRANSLOADING CAPACITY

Contact your local agent or sales@e-crane.com for detailed calculations.

COMPONENT SELECTION

MAIN ELECTRICAL MOTOR

Nominal Output 630 kW/845 hp - 50Hz
 Main Power Supply 400 VAC. 3 phase

LOAD SENSING HYDRAULIC SYSTEM

Main Implement Pumps 1807 l/min
 Max. Pressure 300 bar
 Swing Pump Closed Loop. 434 l/min
 Hydr. Tank Volume 4.000 l

HYDRAULIC CYLINDERS

4 Identical Cylinders Bore 330 mm

SWING SYSTEM

Swing Bearing 3 Row Roller Bearing w. Int Gear
 Diameter 3.119 mm
 Swing Speed 1.6 RPM
 Max. Pressure 275 bar
 Swing Torque 1640 kNm

OPERATOR'S CAB

Operator's Cab Galaxy Cab
 Main Dimensions LxWxH 2.700 x 1.870 x 2.440 mm