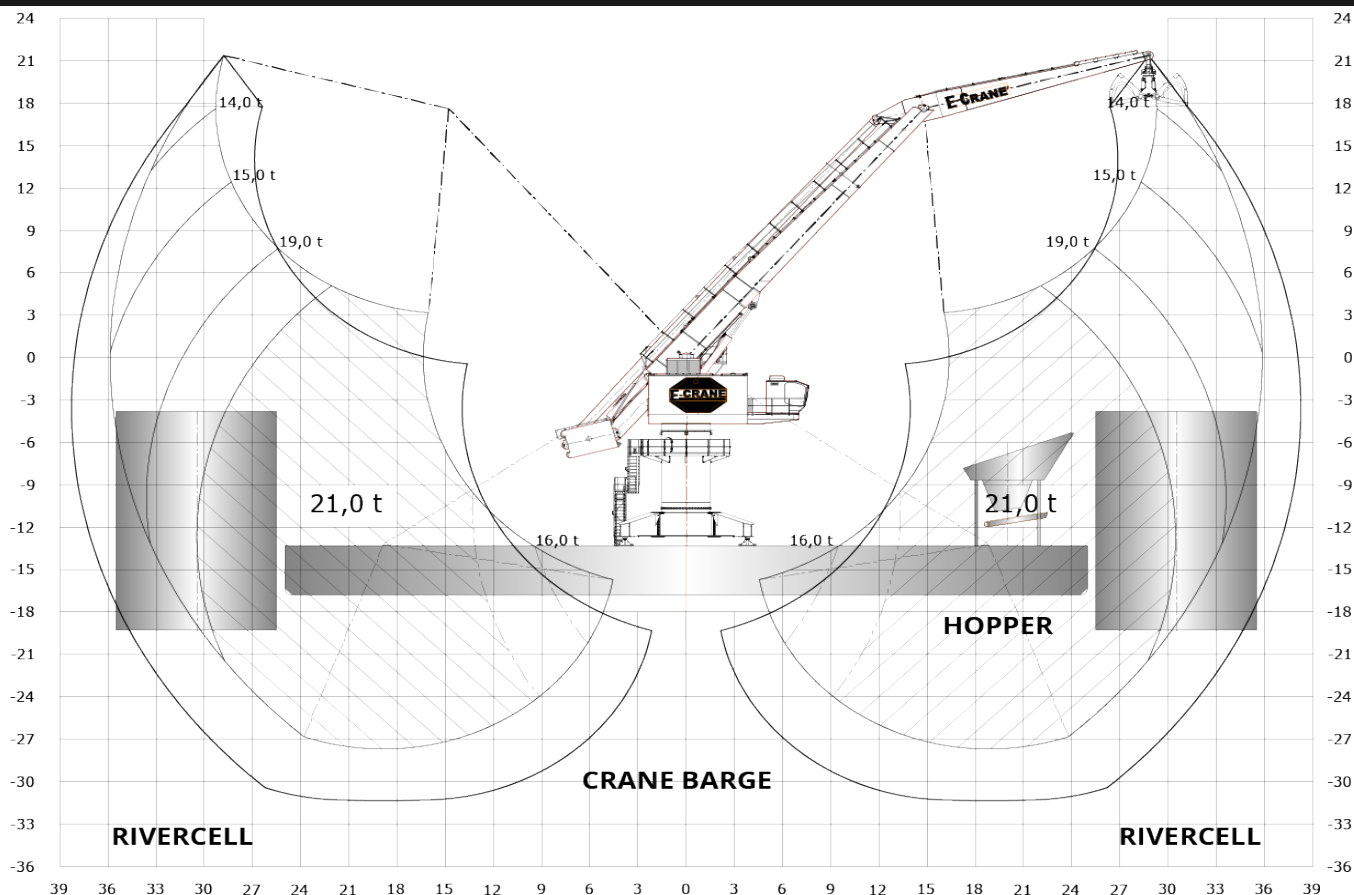


EC14359



LIFTING CAPACITY (FEM 1.001)

Grab Operation max 21,0 t
 Lift Operation max 25,0 t

MAIN DIMENSIONS

Boom Length 23,0 m
 Stick Length 14,5 m
 Main Pivot Height (typical) 16,5 m

WEIGHT

Upper Revolving Frame 238 t
 Pedestal (Fixed & Free Standing) 32 to 39 t
 High Portal Crawler 183,2 t

WORKING AREA

Max. Outreach 35,9 m
 Min. Outreach 2,1 m
 Lifting Height 52,2 m

TRANSLOADING CAPACITY

Contact your local agent or sales@e-crane.com for detailed calculations.

COMPONENT SELECTION

MAIN ELECTRICAL MOTOR

Nominal Output 450 kW/603 hp - 50Hz
 Main Power Supply 400 VAC, 3 phase

LOAD SENSING HYDRAULIC SYSTEM

Main Implement Pumps 1807 l/min
 Max. Pressure 300 bar
 Swing Pump Closed Loop, 434 l/min
 Hydr. Tank Volume 4.000 l

HYDRAULIC CYLINDERS

4 Identical Cylinders Bore 280 mm

SWING SYSTEM

Swing Bearing 3 Row Roller Bearing w. Int Gear
 Diameter 2.955 mm
 Swing Speed 2.1 RPM
 Max. Pressure 275 bar
 Swing Torque 1158 kNm

OPERATOR'S CAB

Operator's Cab Galaxy Cab
 Main Dimensions LxWxH 2.700 x 1.870 x 2.440 mm