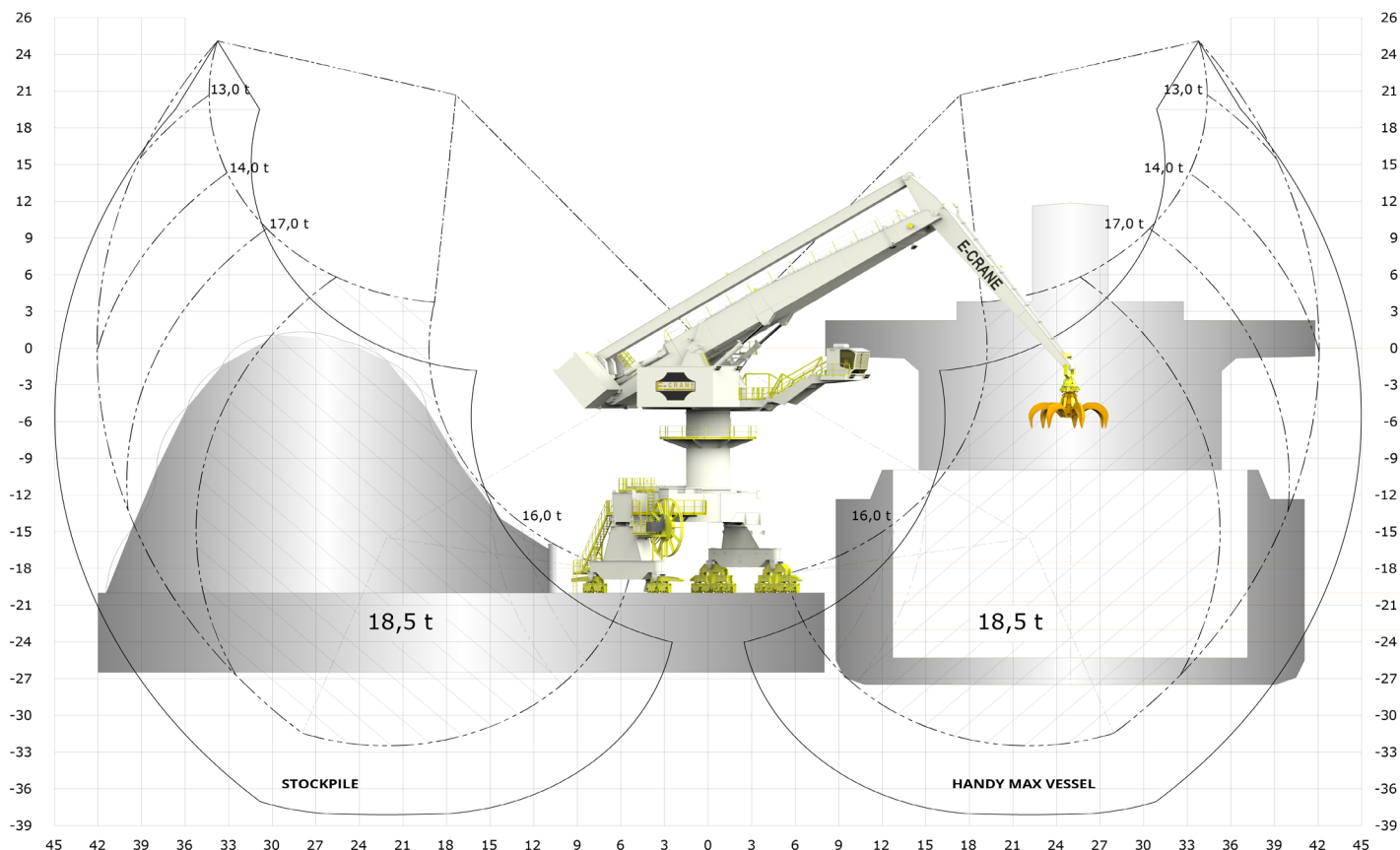


EC13421



LIFTING CAPACITY (FEM 1.001)

Grab Operation max 18,5 t
Lift Operation max 20,0 t

MAIN DIMENSIONS

Boom Length 27,0 m
Stick Length 17,0 m
Main Pivot Height (typical) 20,0 m

WEIGHT

Upper Revolving Frame 268 t
Pedestal (Fixed & Free Standing) 32 to 39 t
High Portal Crawler 183,2 t

WORKING AREA

Max. Outreach 42,1 m
Min. Outreach 5,3 m
Lifting Height 43,0 m

TRANSLOADING CAPACITY

Contact your local agent or sales@e-crane.com for detailed calculations.

COMPONENT SELECTION

MAIN ELECTRICAL MOTOR

Nominal Output 450 kW/603 hp - 50Hz
Main Power Supply 400 VAC. 3 phase

LOAD SENSING HYDRAULIC SYSTEM

Main Implement Pumps 1807 l/min
Max. Pressure 300 bar
Swing Pump Closed Loop. 434 l/min
Hydr. Tank Volume 4.000 l

HYDRAULIC CYLINDERS

4 Identical Cylinders Bore 280 mm

SWING SYSTEM

Swing Bearing 3 Row Roller Bearing w. Int Gear
Diameter 2.955 mm
Swing Speed 2.1 RPM
Max. Pressure 275 bar
Swing Torque 1158 kNm

OPERATOR'S CAB

Operator's Cab Galaxy Cab
Main Dimensions LxWxH 2.700 x 1.870 x 2.440 mm