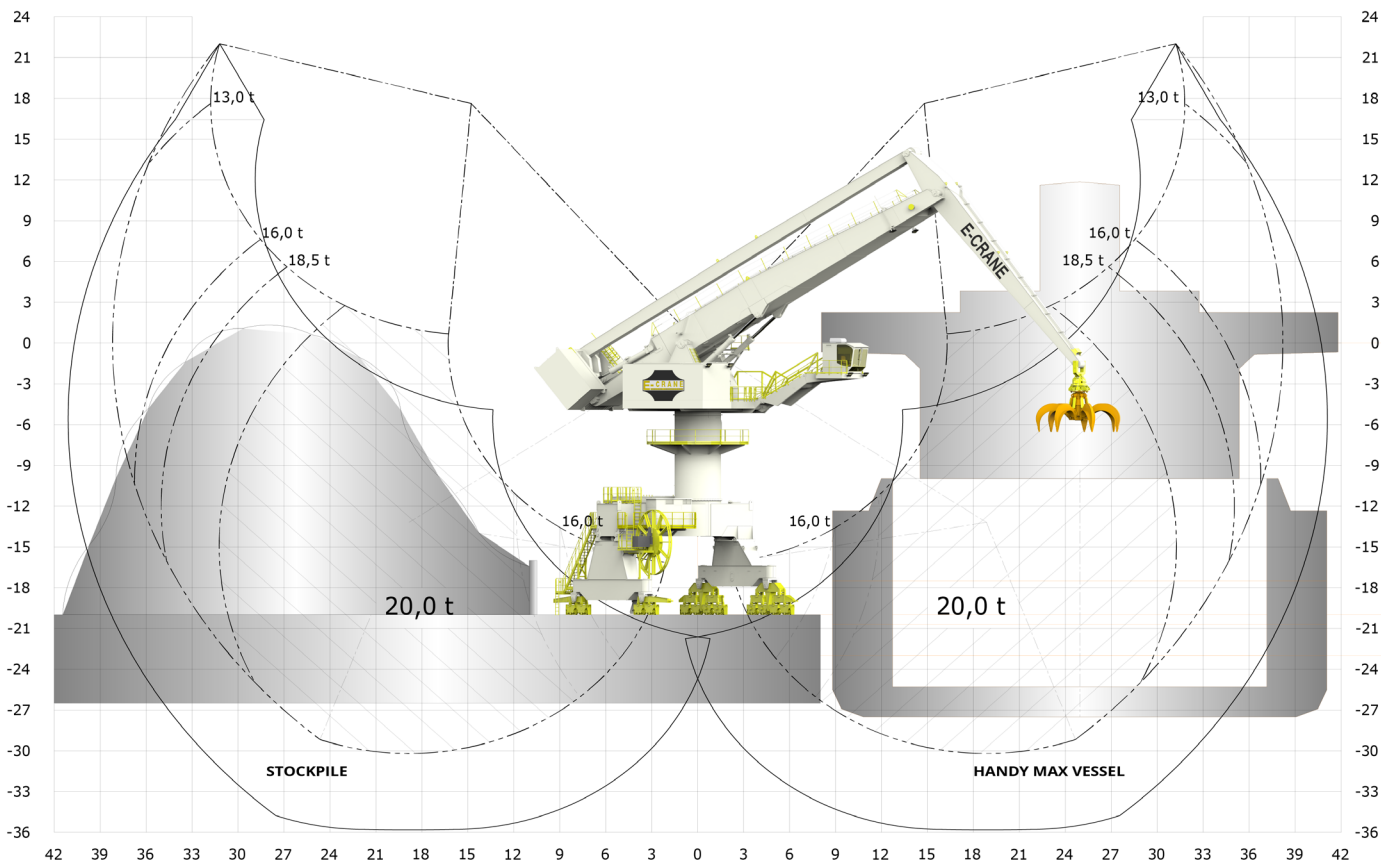


# EC13382



### LIFTING CAPACITY (FEM 1.001)

Grab Operation ..... max 20,0 t  
 Lift Operation ..... max 24,0 t

### MAIN DIMENSIONS

Boom Length ..... 27,0 m  
 Stick Length ..... 17,0 m  
 Main Pivot Height (typical) ..... 20,0 m

### WEIGHT

Upper Revolving Frame ..... 241 t  
 Pedestal (Fixed & Free Standing) ..... 37 to 44 t  
 High Portal Crawler ..... 187,9 t

### WORKING AREA

Max. Outreach ..... 38,2 m  
 Min. Outreach ..... 2,1 m  
 Lifting Height ..... 52,2 m

### TRANSLOADING CAPACITY

Contact your local agent or [sales@e-crane.com](mailto:sales@e-crane.com) for detailed calculations.

### COMPONENT SELECTION

#### MAIN ELECTRICAL MOTOR

Nominal Output ..... 450 kW/603 hp - 50Hz  
 Main Power Supply ..... 400 VAC, 3 phase

#### LOAD SENSING HYDRAULIC SYSTEM

Main Implement Pumps ..... 1807 l/min  
 Max. Pressure ..... 300 bar  
 Swing Pump ..... Closed Loop, 434 l/min  
 Hydr. Tank Volume ..... 4.000 l

#### HYDRAULIC CYLINDERS

4 Identical Cylinders ..... Bore 280 mm

#### SWING SYSTEM

Swing Bearing ..... 3 Row Roller Bearing w. Int Gear  
 Diameter ..... 2.955 mm  
 Swing Speed ..... 2.1 RPM  
 Max. Pressure ..... 275 bar  
 Swing Torque ..... 1158kNm

#### OPERATOR'S CAB

Operator's Cab ..... Galaxy Cab  
 Main Dimensions LxWxH 2.700 x 1.870 x 2.440 mm