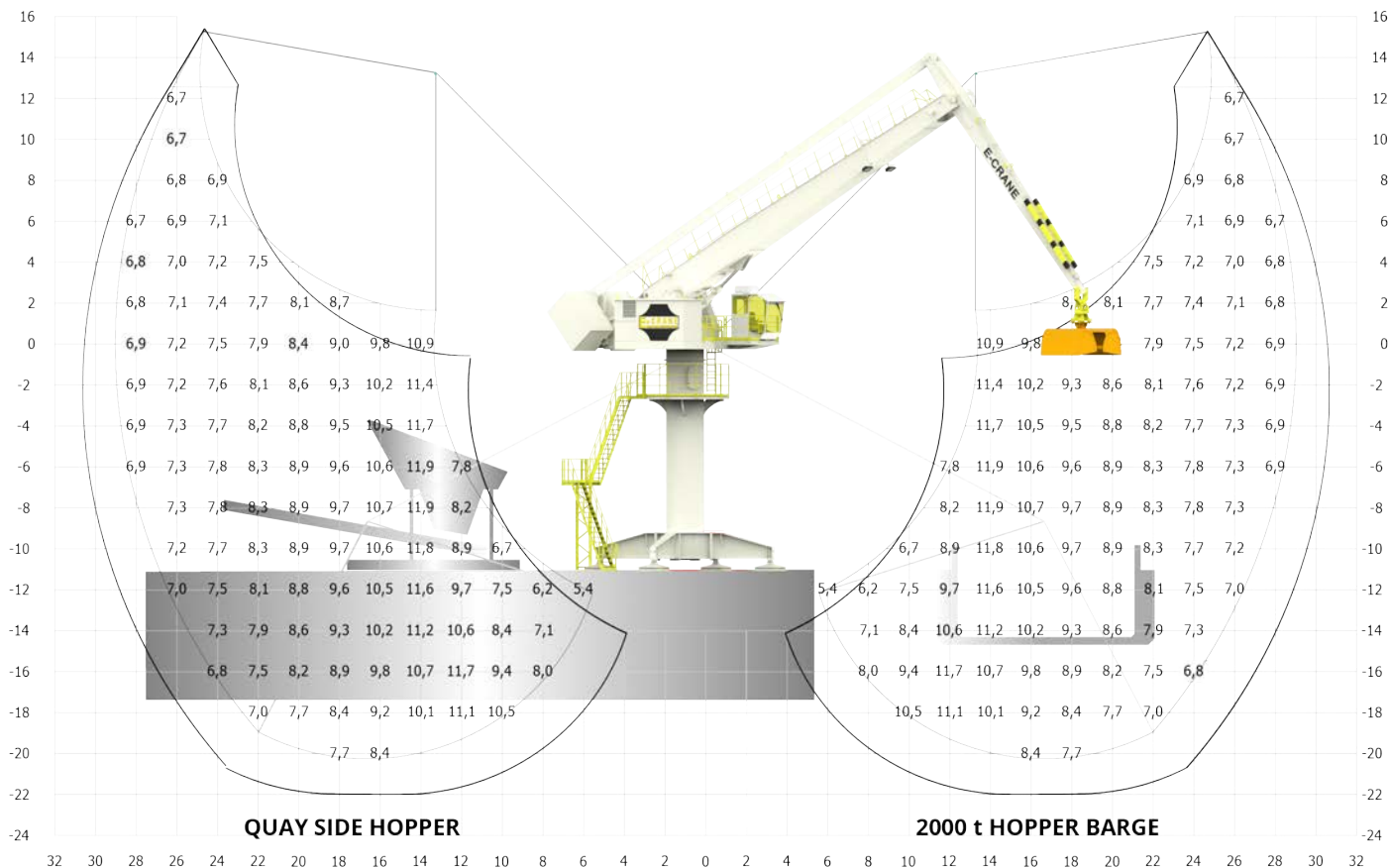


EH4290



LIFTING CAPACITY

Grab Operation (ISO 10567) max 11,9 t

MAIN DIMENSIONS

Boom Length 18,8 m
 Stick Length 11,6 m
 Main Pivot Height (typical) 13,0 m

WEIGHT

Upper Revolving Frame 84 t
 Pedestal (Fixed & Free Standing) 11 to 15 t
 High Portal Crawler 74,6 t

WORKING AREA

Max. Outreach 29,0 m
 Min. Outreach 5,6 m
 Lifting Height 35,5 m

TRANSLOADING CAPACITY (GRAB OPERATION)

Crane Cycles Up to 120 cycles/hour
 Best Daily Production Up to 6.500 t/day
 Peak Performance 500 t/hour

COMPONENT SELECTION

MAIN ELECTRICAL MOTOR

Nominal Output 132 kW/180 hp - 50Hz
 Main Power Supply 400 VAC. 3 phase

LOAD SENSING HYDRAULIC SYSTEM

Main Implement Pumps 526 l/min
 Max. Pressure 325 bar
 Swing Pump Closed Loop. 144 l/min
 Hydr. Tank Volume 1.135 l

HYDRAULIC CYLINDERS

2 Identical Cylinders Bore 220 mm

SWING SYSTEM

Swing Bearing Cross Roller Bearing w. Int Gear
 Diameter 1.745 mm
 Swing Speed 3 RPM
 Max. Pressure 275 bar
 Swing Torque 362 kNm

OPERATOR'S CAB

Operator's Cab Space Cab
 Main Dimensions LxWxH 2.370 x 1.270 x 2.220 mm