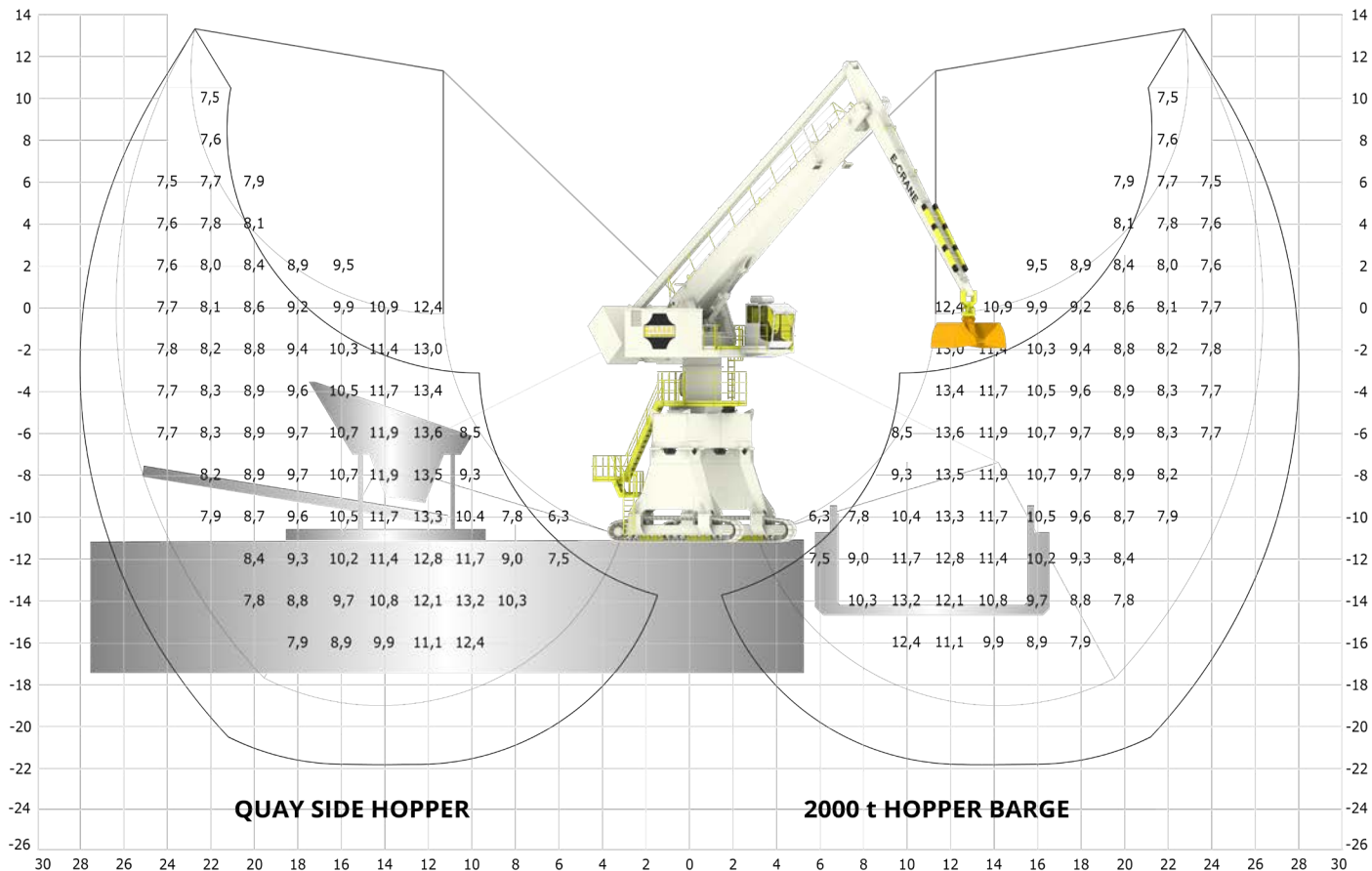


# EH4248



### LIFTING CAPACITY

Grab Operation (ISO 10567) ..... max 13,6 t

### MAIN DIMENSIONS

Boom Length ..... 16,0 m  
 Stick Length ..... 9,9 m  
 Main Pivot Height (typical) ..... 11,5 m

### WEIGHT

Upper Revolving Frame ..... 75 t  
 Pedestal (Fixed & Free Standing) ..... 11 to 15 t  
 High Portal Crawler ..... 74,6 t

### WORKING AREA

Max. Outreach ..... 24,8 m  
 Min. Outreach ..... 4,8 m  
 Lifting Height ..... 30,3 m

### TRANSLOADING CAPACITY (GRAB OPERATION)

Crane Cycles ..... Up to 120 cycles/hour  
 Best Daily Production ..... Up to 6.500 t/day  
 Peak Performance ..... 500 t/hour

### COMPONENT SELECTION

#### MAIN ELECTRICAL MOTOR

Nominal Output ..... 132 kW/180 hp - 50Hz  
 Main Power Supply ..... 400 VAC. 3 phase

#### LOAD SENSING HYDRAULIC SYSTEM

Main Implement Pumps ..... 526 l/min  
 Max. Pressure ..... 325 bar  
 Swing Pump ..... Closed Loop. 144 l/min  
 Hydr. Tank Volume ..... 1.135 l

#### HYDRAULIC CYLINDERS

2 Identical Cylinders ..... Bore 220 mm

#### SWING SYSTEM

Swing Bearing ..... Cross Roller Bearing w. Int Gear  
 Diameter ..... 1.745 mm  
 Swing Speed ..... 3 RPM  
 Max. Pressure ..... 275 bar  
 Swing Torque ..... 191 kNm

#### OPERATOR'S CAB

Operator's Cab ..... Space Cab  
 Main Dimensions LxWxH 2.370 x 1.270 x 2.220 mm