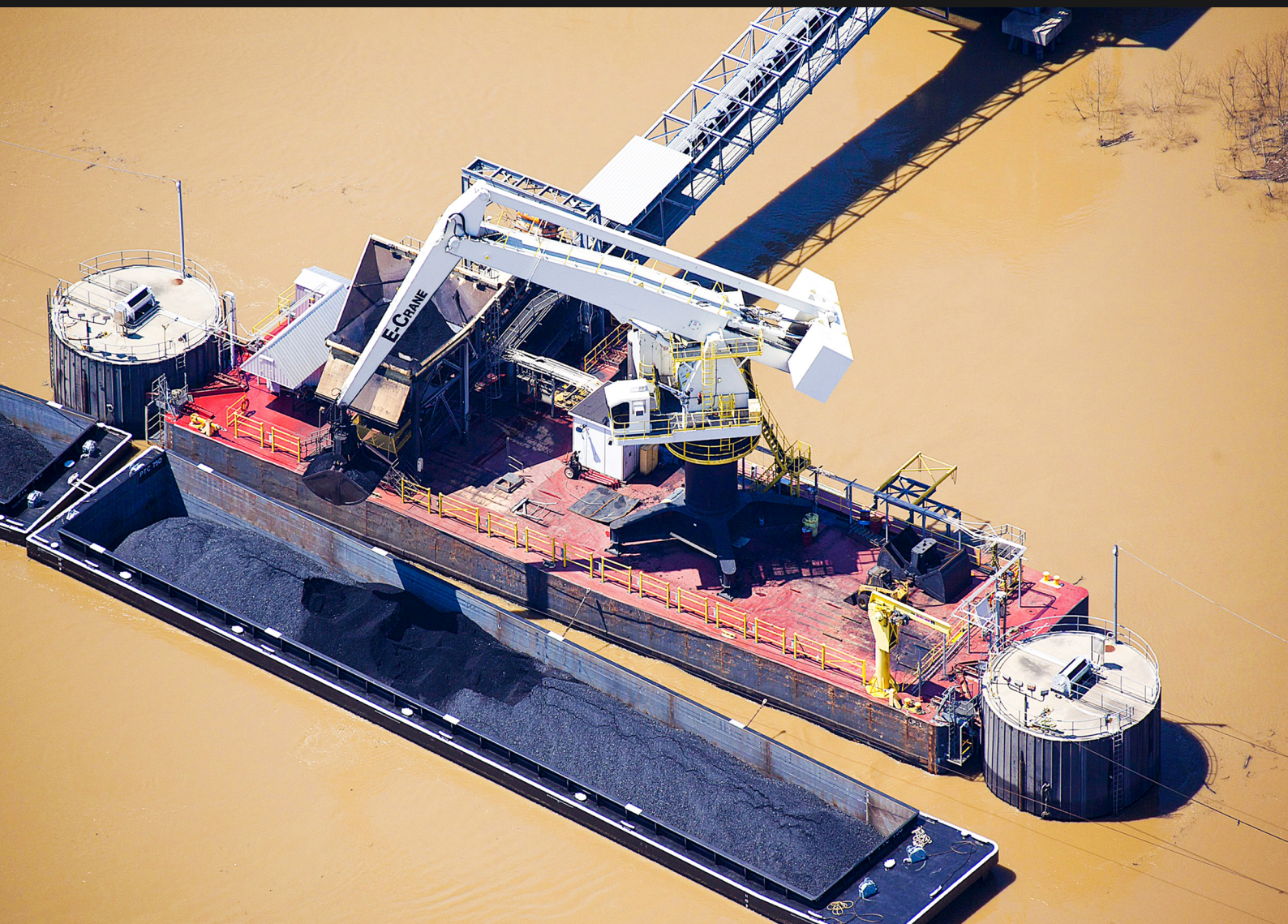


2000 SERIES



CUSTOMER: POWERSOUTH ENERGY

When PowerSouth Energy Cooperative upgraded its Lowman Power Plant on the Tombigbee River for flue gas desulfurization (FGD), E-Crane® offered a turnkey solution to the increased material unloading and river level problems: an E-Crane® floating terminal consisting of two barges (2000 Series E-Crane® and conveyor back-up), a hopper, a barge-haul system, and a barge-breasting system.

Department Supervisor Tom Noble: **“The E-Crane® system has cut our unloading time in half, cut our maintenance time dramatically, and just generally simplified our lives and reduced our costs substantially”**. Utility Supervisor Mike Barton adds: **“E-Crane® maintenance**

Type:	18264 PD-E
Location:	LeRoy, Alabama, USA
Application:	Offloading Coal and Limestone from Barges
Mount:	Barge Mounted
Lifting Capacity:	27 tons
Reach:	26.4 m
Attachment:	19 m ³ Clamshell Grab
Power Source:	450 kW Electric Motor
Productivity:	1500 tons per hour

“**E-Crane® cuts unloading time 50% with floating terminal at Power-South’s Lowman Power Plant**”

is simple, quick and easy. The E-Crane® is much safer and more reliable than the old gantry rope crane. And the E-Crane® system is easy to operate, so the fatigue

factor is less. With the floating terminal, the barges are always at the same level as the E-Crane® making it easy to bring them into position, unload them, and move them on”.