

MH 900 SERIES

E-CRANE®

QUILIBRIUM

Professional Bulk Handling Solutions

No Ropes

E-Crane's superior crane balance:

- Provides excellent stability
- Reduces barge dimensions
- Results in unmatched energy efficiency
- Combines superior productivity with longterm reliability

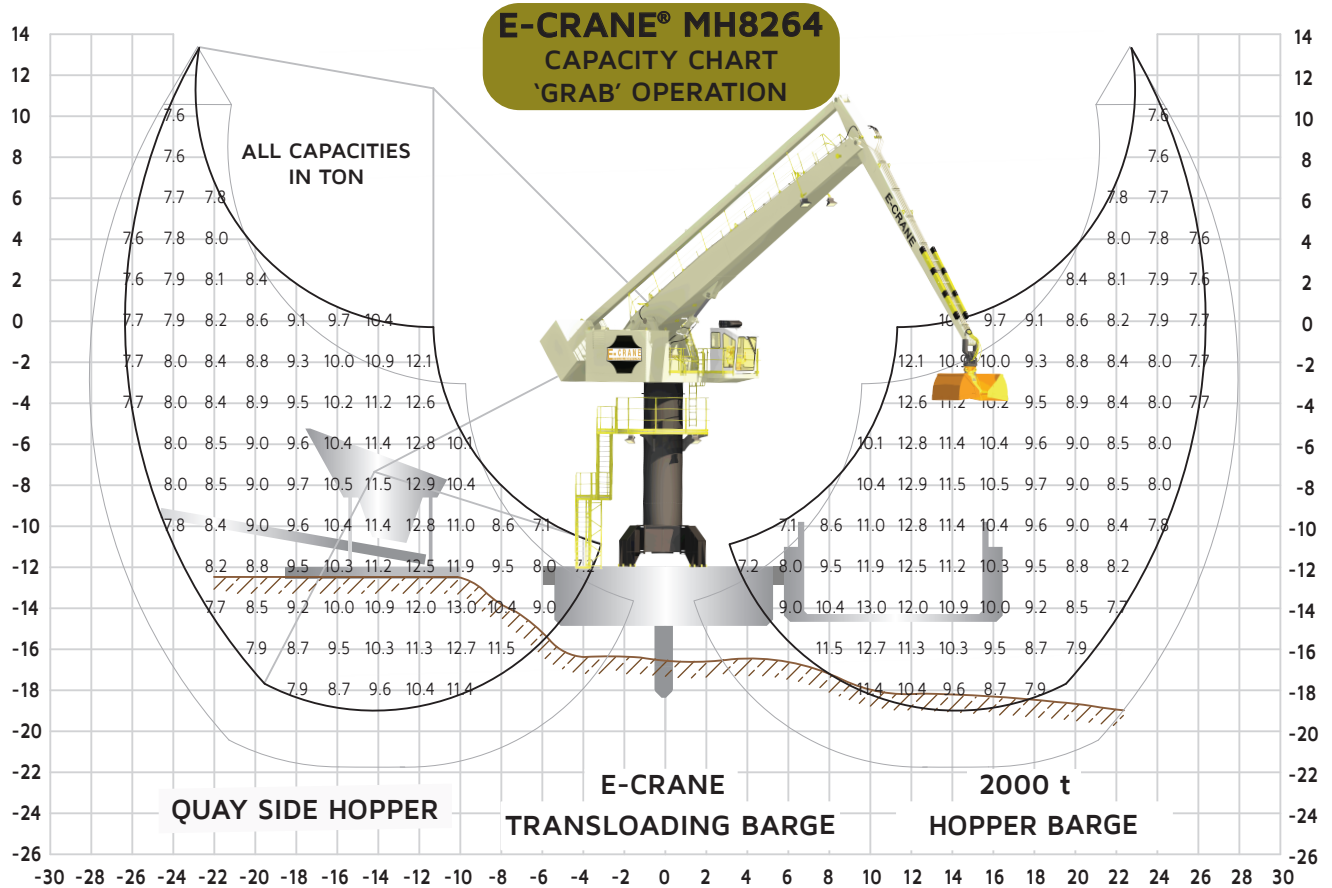
Rigid connection with grab:

- High placement accuracy
- Work underneath coamings
- Optimal grab weight
- Best grab opening & closing speed

Up to
500 t/hour



Custom Engineered for Superior Productivity



Material Handler Capacity

Grab Operation (ISO 10567).....max 13 t

Main Dimensions

Boom Length16,0 m + 4,5 m
Stick Length11,6 m + 2,5 m
Main Pivot Height (typical)11 m above deck

Weight

Crane Upper (Incl. Counterweight)79 t

Working Area

Max. Outreach26,4 m
Min. Outreach3,1 m
Lifting Height32,3 m

Transloading Capacity (Grab Operation)

Crane CyclesUp to 120 cycles/hour
Best Daily ProductionUp to 6.500 t/day
Peak Performance500 t/hour

Design Conditions

Max Heel/Trim3°/2°
Ambient Working Temperature-25 to 45°C
Max. Windspeed20 m/s (operating conditions)
.....63 m/s (parked & stowed position)

Component Selection

Main Electrical Motor

Nominal Output132 kW/180 hp – 50 Hz/60 Hz
Main Power Supply400/480 VAC, 3 phase

Load Sensing Hydraulic System

Main Implement Pumps 190 cc, 384 l/min
Swing PumpClosed-loop, 113 l/min
Capacity Hydraulic Tank1.400 liter

Hydraulic Cylinders

2 Identical CylindersBore 220 mm/Stroke 1.508 mm

Swing Bearing

Cross Roller BearingInternal gear

Forces & Moments

(reaction @ swing bearing)

**Standard Operations (sheltered water) acc. to LRS
Load Combination Case 1
(Hoisting Factor: 1.365 / Duty Factor: 1.200)**

Overturning Moment2.630 kNm
Vertical Force1.290 kN
Horizontal Force70 kN

Open Sea Operations

Forces and moments are determined by the detailed design parameters of the barge in combination with the dynamic hoisting factor.