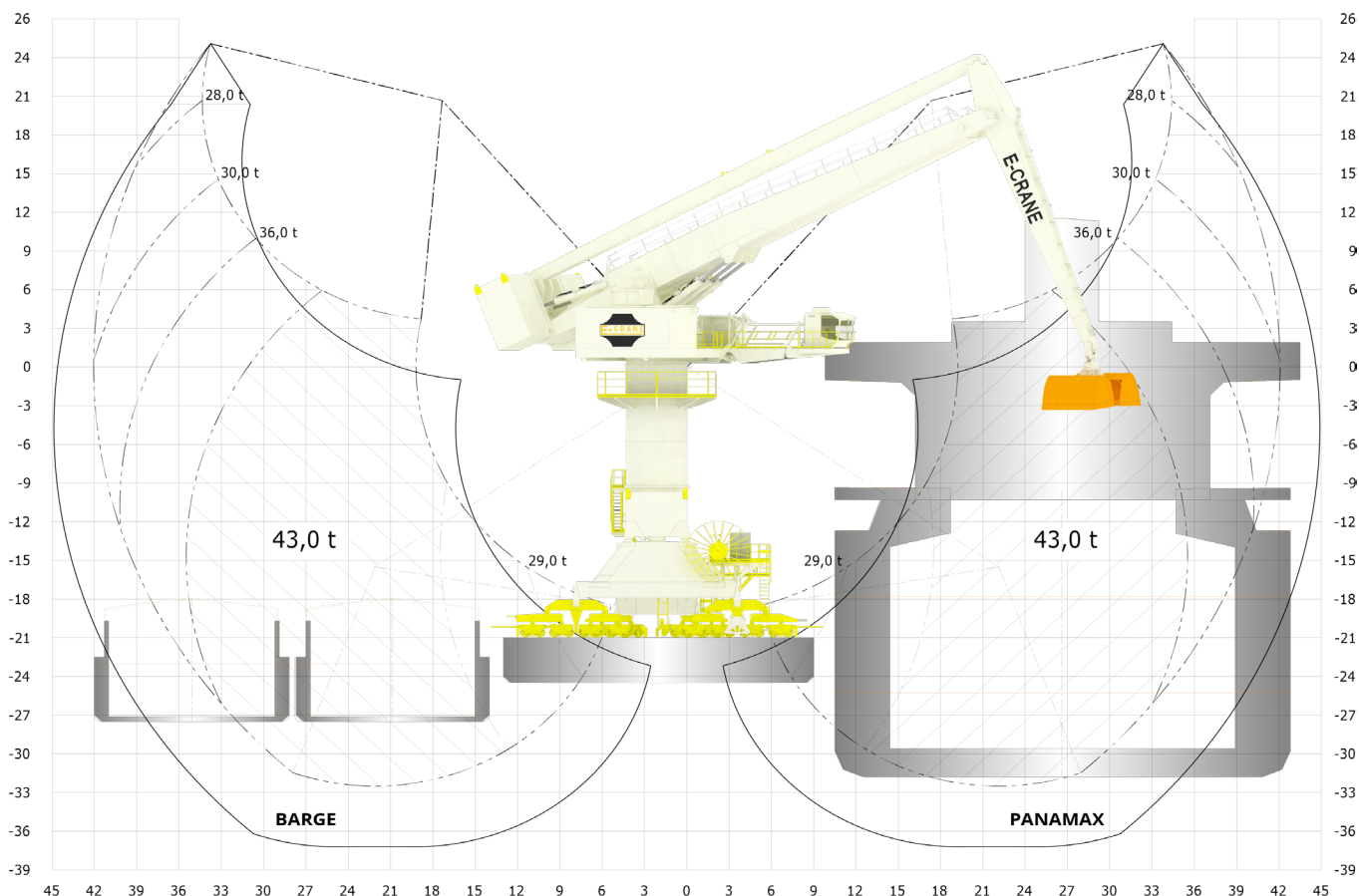


EC28421



LIFTING CAPACITY (FEM 1.001)

Grab Operation max 43,0 t
 Lift Operation max 52,0 t

MAIN DIMENSIONS

Boom Length 27,0 m
 Stick Length 17,0 m
 Main Pivot Height (typical) 20,0 m

WEIGHT

Upper Revolving Frame 419 t
 Pedestal (Fixed & Free Standing) 57 to 69 t
 High Portal Crawler 242,8 t

WORKING AREA

Max. Outreach 42,1m
 Min. Outreach 5,3 m
 Lifting Height 57,6 m

TRANSLOADING CAPACITY

Contact your local agent or sales@e-crane.com for detailed calculations.

COMPONENT SELECTION

Nominal Output 630 kW/845 hp - 50Hz
 Main Power Supply 400 VAC. 3 phase

Main Implement Pumps 1807 l/min
 Max. Pressure 300 bar
 Swing Pump Closed Loop. 434 l/min
 Hydr. Tank Volume 4.000 l

5 Identical Cylinders Bore 330 mm

Swing Bearing 3 Row Roller Bearing w. Int Gear
 Diameter 3.768 mm
 Swing Speed 1.3 RPM
 Max. Pressure 275 bar
 Swing Torque 1982 kNm

Operator's Cab Galaxy Cab
 Main Dimensions LxWxH 2.700 x 1.870 x 2.440 mm