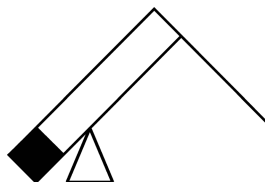

E-Crane[®] Capacity Charts

EH900 Series (US)

Model: EH8248 CR-D
EH8248 PD-E



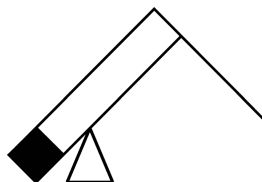
**E-Crane[®] Material Handler
Capacity Charts
E-Handler[®] EH900 Series
Model EH8248**

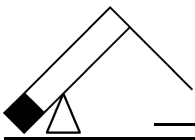
CONTENTS

EH8248 CR-D 4
 Rated Lift Capacity 4

EH8248 PD-E 6
 Rated Lift Capacity 6

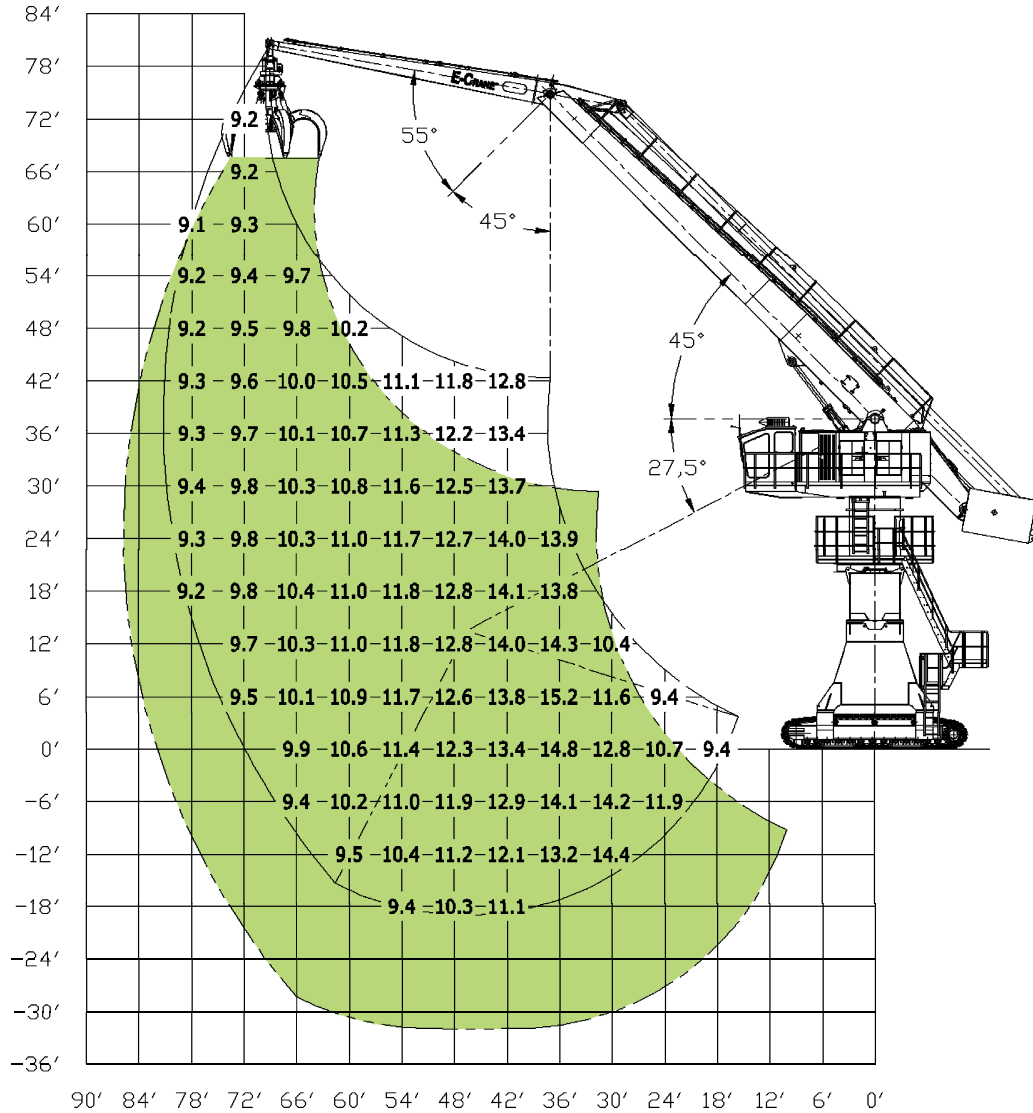
MODEL EH8248 TECHNICAL SPECS 8





EH8248 CR-D

Rated Lift Capacity



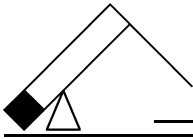
Lift Capacities are stated in US tons (1 ton = 1 ST = 2,000 lb) on the lifting gear's stick tip, and can be lifted 360° on firm, level supporting surface. The user shall make allowances for job conditions such as soft or uneven ground.

Lift Capacities shown do not exceed 75% of minimum tipping loads or 87% of hydraulic capacities.
 Lift Capacities apply only to the machine as originally manufactured and normally equipped by the manufacturer.
 Lift Capacities are in compliance with ISO 10567:2007

The mass of slings and any auxiliary lifting devices shall be deducted from the rated load to determine the net load that may be lifted.

The operator should be fully acquainted with the operator's manual and the operating safety manual furnished by the manufacturer before operating the machine.

The total mass of the machine is 263,452 lb. Included in this mass are 2.95 ft flat shoes, all operating fluids and a 165 lb operator.



E-HANDLER®, EH900 SERIES MODEL 8248CR-D, ACC. SAE J2518: APR2008												
R [FT]	18	24	30	36	42	48	54	60	66	72	78	LOAD @MAX RADIUS L [LBF] R [FT]
	H [FT]											
72										18400*		18400* 73.7
66										18500*		18300* 76.2
60										18600*	18263*	18300* 78.2
54									19400*	18800*	18350*	18200* 79.6
48								20500*	19700*	19000*	18500*	18200* 80.6
42					25700*	23600*	22100*	20900*	20000*	19200*	18600*	18200* 81.2
36					26700*	24400*	22700*	21300*	20300*	19400*	18700*	18300* 81.2
30					27500*	25000*	23100*	21700*	20500*	19600*	18700*	18300* 80.9
24					28000*	25400*	23400*	21900*	20700*	19600*	18700*	18300* 80.1
18					28200*	25600*	23600*	22000*	20700*	19600*	18500*	18300* 78.8
12					28600*	25600*	23600*	22000*	20600*	19400*		18300* 77.1
6		18800*	23100*	30500*	27600*	25300*	23300*	21700*	20300*	19000*		18300* 74.8
0	18700*	21300*	25600*	29600*	26900*	24700*	22800*	21200*	19700*			18200* 72.0
-6		23800*	28300*	28200*	25800*	23700*	22000*	20400*	18800*			18000* 68.5
-12			28800*	26400*	24300*	22400*	20700*	19000*				17700* 64.3
-18					22200*	20500*	18800*					17100* 59.1

NOTE:

Lift Capacities are stated in US tons (1 ton = 2,000 lb) on the lifting gear's stick tip, and can be lifted 360° on firm, level supporting surface. The user shall make allowances for job conditions such as soft or uneven ground.

Lift Capacities shown do not exceed 75% of minimum tipping loads or 87% of hydraulic capacities (320 bar / 4640 psi) (indicated via *).

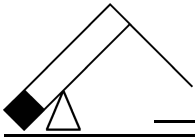
Lift Capacities apply only to the machine as originally manufactured and normally equipped by the manufacturer.

Lift Capacities are in compliance with ISO 10567:2007

The mass of slings and any auxiliary lifting devices shall be deducted from the rated load to determine the net load that may be lifted.

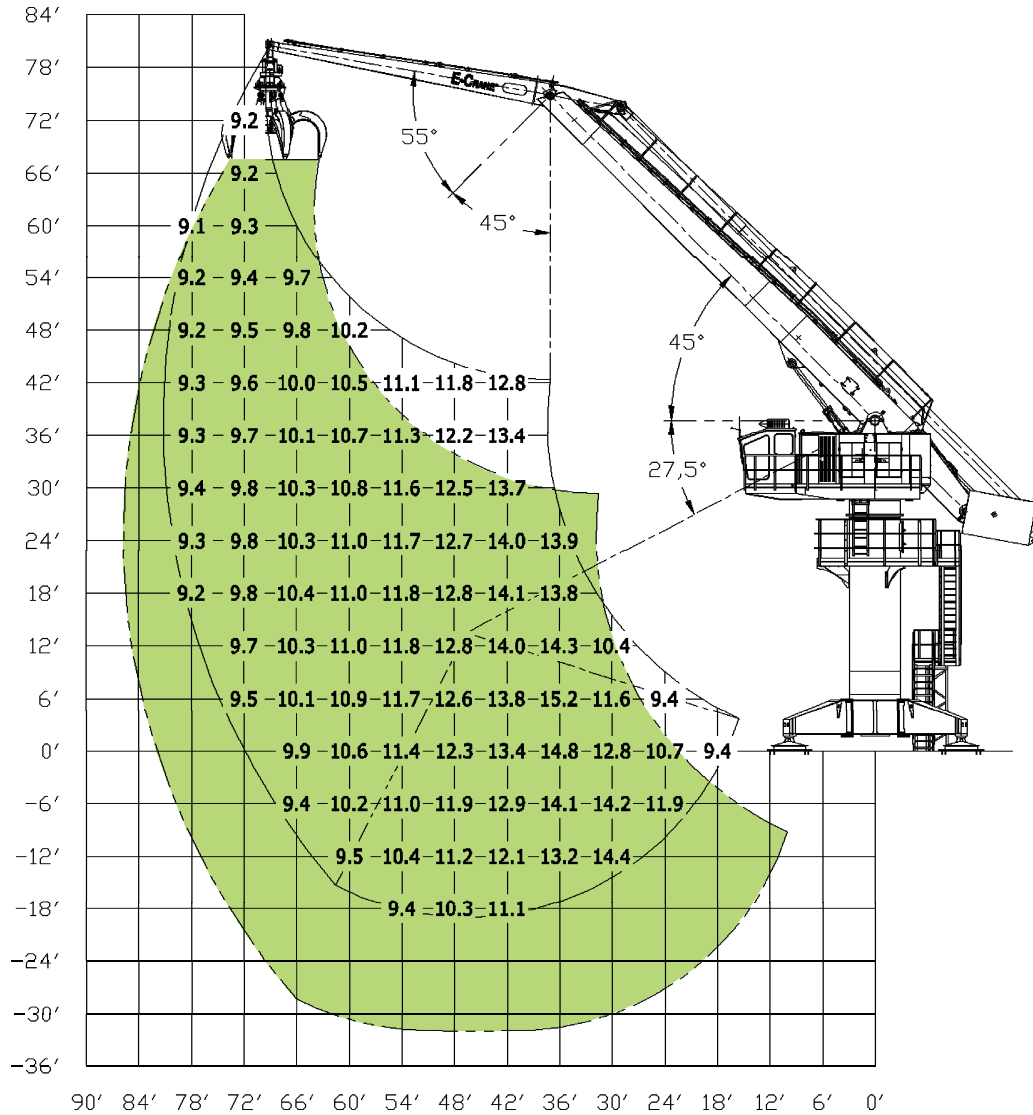
The operator should be fully acquainted with the operator's manual and the operating safety manual furnished by the manufacturer before operating the machine.

The total mass of the machine is 263,452 lb. Included in this mass are 2.95 ft flat shoes, all operating fluids and a 165 lb operator.



EH8248 PD-E

Rated Lift Capacity



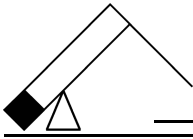
Lift Capacities are stated in US tons (1 ton = 1 ST = 2,000 lb) on the lifting gear's stick tip, and can be lifted 360° on firm, level supporting surface. The user shall make allowances for job conditions such as soft or uneven ground.

Lift Capacities shown do not exceed 75% of minimum tipping loads or 87% of hydraulic capacities.
 Lift Capacities apply only to the machine as originally manufactured and normally equipped by the manufacturer.
 Lift Capacities are in compliance with ISO 10567:2007

The mass of slings and any auxiliary lifting devices shall be deducted from the rated load to determine the net load that may be lifted.

The operator should be fully acquainted with the operator's manual and the operating safety manual furnished by the manufacturer before operating the machine.

The total mass of the machine is 196,683 lb. Included in this mass all operating fluids and a 165 lb operator.



E-HANDLER®, EH900 SERIES MODEL 8248PD-E, ACC. SAE J2518: APR2008

R [FT]	18	24	30	36	42	48	54	60	66	72	78	LOAD @MAX RADIUS	
	H [FT]											L [LBF]	R [FT]
72										18400*		18400*	73.7
66										18500*		18300*	76.2
60										18600*	18263*	18300*	78.2
54									19400*	18800*	18350*	18200*	79.6
48								20500*	19700*	19000*	18500*	18200*	80.6
42					25700*	23600*	22100*	20900*	20000*	19200*	18600*	18200*	81.2
36					26700*	24400*	22700*	21300*	20300*	19400*	18700*	18300*	81.2
30					27500*	25000*	23100*	21700*	20500*	19600*	18700*	18300*	80.9
24					28000*	25400*	23400*	21900*	20700*	19600*	18700*	18300*	80.1
18					27500*	25600*	23600*	22000*	20700*	19600*	18500*	18300*	78.8
12					20900*	28100*	23600*	22000*	20600*	19400*		18300*	77.1
6		18800*	23100*	30500*	27600*	25300*	23300*	21700*	20300*	19000*		18300*	74.8
0	18700*	21300*	25600*	29600*	26900*	24700*	22800*	21200*	19700*			18200*	72.0
-6		23800*	28300*	28200*	25800*	23700*	22000*	20400*	18800*			18000*	68.5
-12			28800*	26400*	24300*	22400*	20700*	19000*				17700*	64.3
-18					22200*	20500*	18800*					17100*	59.1

NOTE:

Lift Capacities are stated in US tons (1 ton = 1 ST = 2,000 lb) on the lifting gear's stick tip, and can be lifted 360° on firm, level supporting surface. The user shall make allowances for job conditions such as soft or uneven ground.

Lift Capacities shown do not exceed 75% of minimum tipping loads or 87% of hydraulic capacities (320 bar / 4640 psi) (indicated via *).

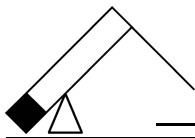
Lift Capacities apply only to the machine as originally manufactured and normally equipped by the manufacturer.

Lift Capacities are in compliance with ISO 10567:2007

The mass of slings and any auxiliary lifting devices shall be deducted from the rated load to determine the net load that may be lifted.

The operator should be fully acquainted with the operator's manual and the operating safety manual furnished by the manufacturer before operating the machine.

The total mass of the machine is 196,983 lb. Included in this mass all operating fluids and a 165 lb operator.



MODEL EH8248 TECHNICAL SPECS

	Specifications English (*)		Specifications Metric (*)	
Operating Range: (related to ground reference plane (GRP) and centerline of rotation)				
Minimum Outreach Range (from centerline of rotation)	15'-7"		4,750 m	
Maximum Outreach (from centerline of rotation)	81'-3.3/16"		24,769 m	
Downreach Range (below GRP)	18'-11.7/8"		5,788 m	
Lifting Range (vertical lift)	99'-5.3/4"		30,321 m	
Boom Operating Angles (above and below horizontal)	+45°/-27.5°		+45°/-27.5°	
Stick Operating Angles (before and after vertical)	+55°/-45°		+55°/-45°	
Degrees of Rotation	360° continuous		360° continuous	
Main Hydr. & Elec. Specs:	CR-D	PD-E	CR-D	PD-E
Power Supply	-	3-Phase 480 Volts AC, 60 Hz	-	3-Phase 400 Volts AC, 50 Hz
Generator Set	200 kVA	-	200 kVA	-
Electrical Motor	177 hp	177 hp	132 kW	132 kW
Implement Pumps				
Max. Flow	101.7 gpm	101.7 gpm	385 l/min	385 l/min
Max. Working Circuit Pressure	4640 psi	4640 psi	320 bar	320 bar
Swing Pump				
Max. Flow	29.5 gpm	29.5 gpm	112 l/min	112 l/min
Max. Working Circuit Pressure	4061 psi	4061 psi	280 bar	280 bar
Hydraulic System Relief Setting	4650 psi	4650 psi	320 bar	320 bar
Hydraulic Tank Refill Capacity	300 USgal	300 USgal	1.135 l	1.135 l
Dimensions:				
Boom Length	52'-5.15/16"		16,000 m	
Stick Length	32'-5.3/4"		9,900 m	
Total Weight Superstructure**	159,500 lb		72.500 kg	
Total Weight Model EH8248 as standard equipped	CR-D	PD-E	CR-D	PD-E
	263,452 lb	196,983 lb	119.500 kg	89.350 kg

(*) Materials and specifications are subject to change without notice.

(**) Operating weight does include lubricants, hydraulic oil and operator
See your E-Crane[®] dealer for available options.

©2015 E-Crane Worldwide/Indusign nv. All rights reserved. All technical specifications are subject to change without prior notice and without incurring responsibility for E-handlers[®] previously sold! Changes, errors and misprints reserved.