

---

# **E-Crane<sup>®</sup> Capacity Charts**

## **3000 Series**

---

Model 26317

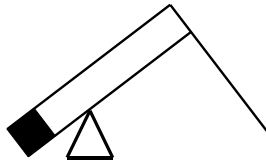
Model 23359

Model 30382

Model 27450

**Model 26478**





**E-Crane<sup>®</sup> Capacity Charts**  
**3000 Series**  
**Model 26478**

**CONTENTS**

**DUTY CYCLE OPERATION . . . . . 3**  
    **Load Chart (USton/ft) . . . . . 3**  
    **Load Chart (Mton/m) . . . . . 5**  
**LIFT CRANE OPERATION . . . . . 7**  
    **Load Chart (USton/ft) . . . . . 7**  
    **Load Chart (Mton/m) . . . . . 9**  
**SPECIFICATIONS . . . . . 11**

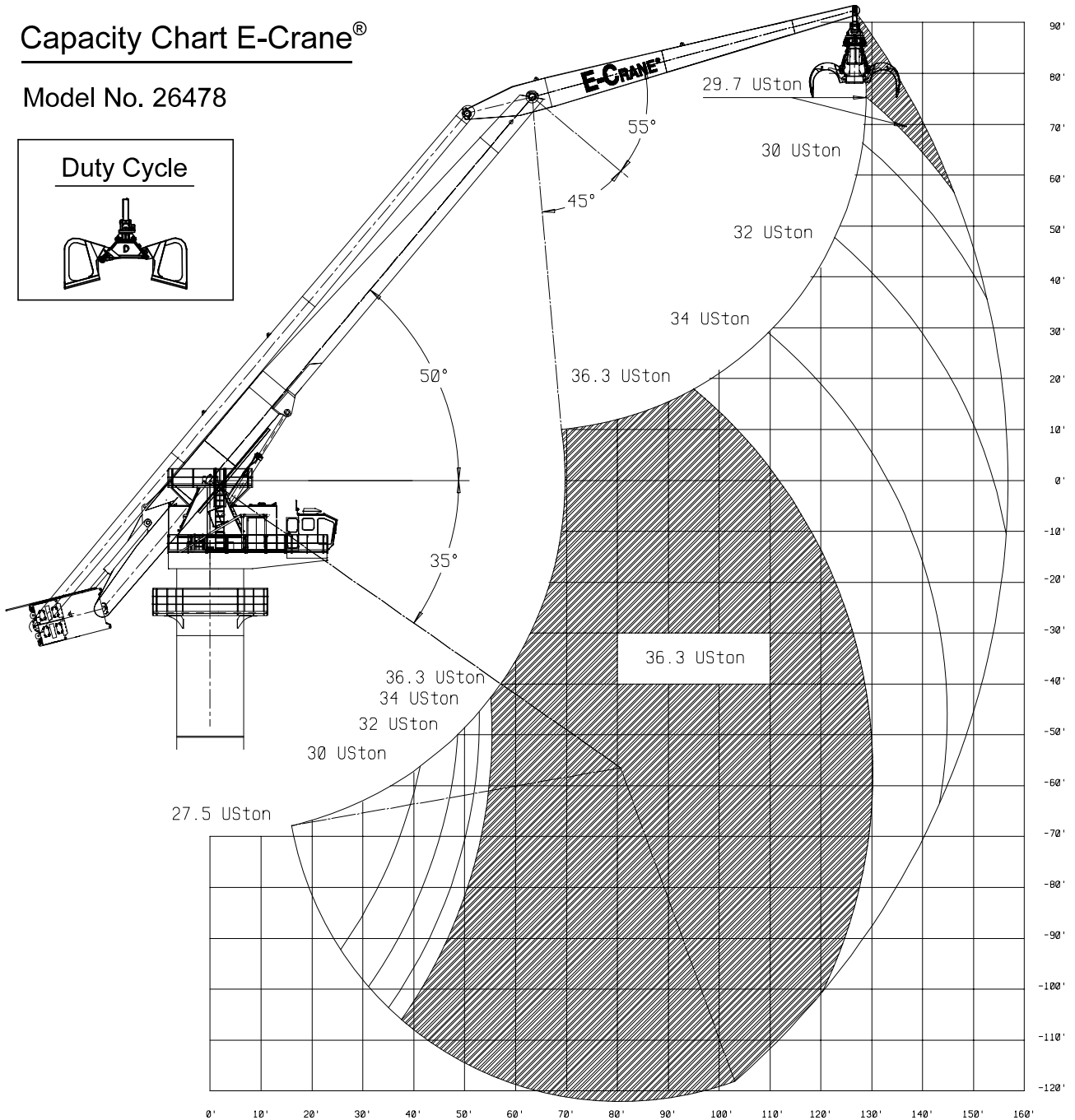
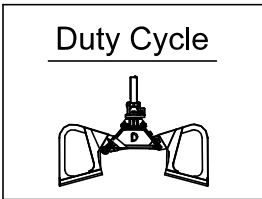


**DUTY CYCLE OPERATION**

**Load Chart (USton/ft)**

**Capacity Chart E-Crane®**

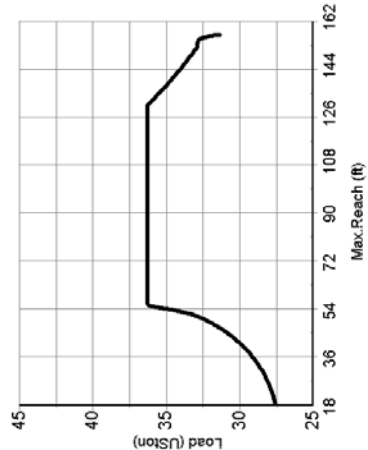
Model No. 26478



Dwg.: ALI2010-007

Crane Classification: DIN15018 Teil1, H3B5

CAPACITY CHART (USton) / Duty Cycle Operation E-crane 26478																									
HEIGHT Relative to BOOM- PIN (ft)	REACH (ft)																								
	18	24	30	36	42	48	54	60	66	72	78	84	90	96	102	108	114	120	126	132	138	144	150	156	
84																									
78																									
72																									
66																									
60																									
54																									
48																									
42																									
36																									
30																									
24																									
18																									
12																									
6																									
0																									
-6																									
-12																									
-18																									
-24																									
-30																									
-36																									
-42																									
-48																									
-54																									
-60																									
-66																									
-72																									
-78																									
-84																									
-90																									
-96																									
-102																									
-108																									
-114																									
-120																									

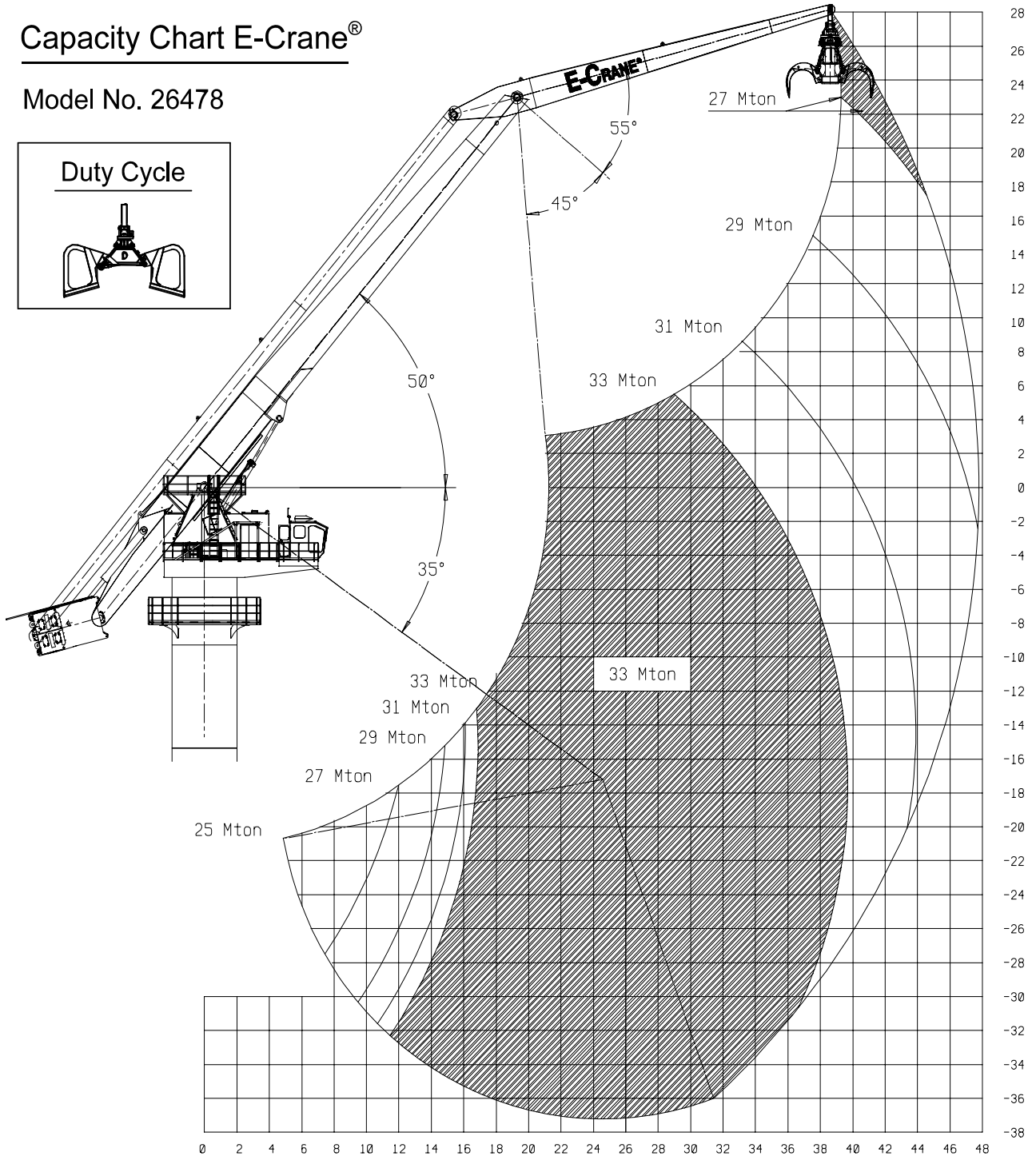
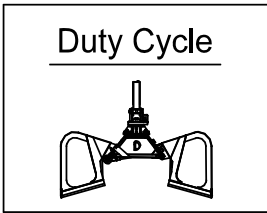


Crane Classification: DIN15018 Teil1, H3B5

**Load Chart (Mton/m)**

**Capacity Chart E-Crane®**

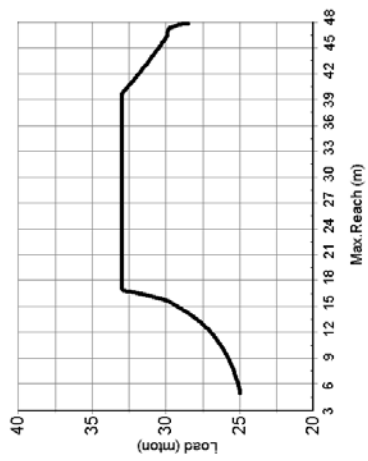
Model No. 26478



Dwg.: ALI2010-006

Crane Classification: DIN15018 Teil1, H3B5

HEIGHT Relative to BOOM- PIN (m)		CAPACITY CHART (mton) / Duty Cycle Operation E-crane 26478																				
		REACH (m)																				
		7	9	11	13	15	17	19	21	23	25	27	29	31	33	35	37	39	41	43	45	47
24																			27,00			
22																			27,00			
20																			27,07	27,00		
18																			27,83	27,34	27,04	
16																			28,31	27,83	27,34	27,02
14																			28,86	28,41	27,71	27,20
12																			29,84	29,43	28,86	28,31
10																			30,36	30,01	29,86	29,43
8																			31,19	30,75	30,36	29,93
6																			31,19	30,75	30,36	29,93
4																			32,24	31,69	31,19	30,75
2																			32,84	32,24	31,69	31,08
0																			33,00	33,00	33,00	33,00
-2																			33,00	33,00	33,00	33,00
-4																			33,00	33,00	33,00	33,00
-6																			33,00	33,00	33,00	33,00
-8																			33,00	33,00	33,00	33,00
-10																			33,00	33,00	33,00	33,00
-12																			33,00	33,00	33,00	33,00
-14																			33,00	33,00	33,00	33,00
-16																			33,00	33,00	33,00	33,00
-18																			33,00	33,00	33,00	33,00
-20																			33,00	33,00	33,00	33,00
-22																			33,00	33,00	33,00	33,00
-24																			33,00	33,00	33,00	33,00
-26																			33,00	33,00	33,00	33,00
-28																			33,00	33,00	33,00	33,00
-30																			33,00	33,00	33,00	33,00
-32																			33,00	33,00	33,00	33,00
-34																			33,00	33,00	33,00	33,00
-36																			33,00	33,00	33,00	33,00



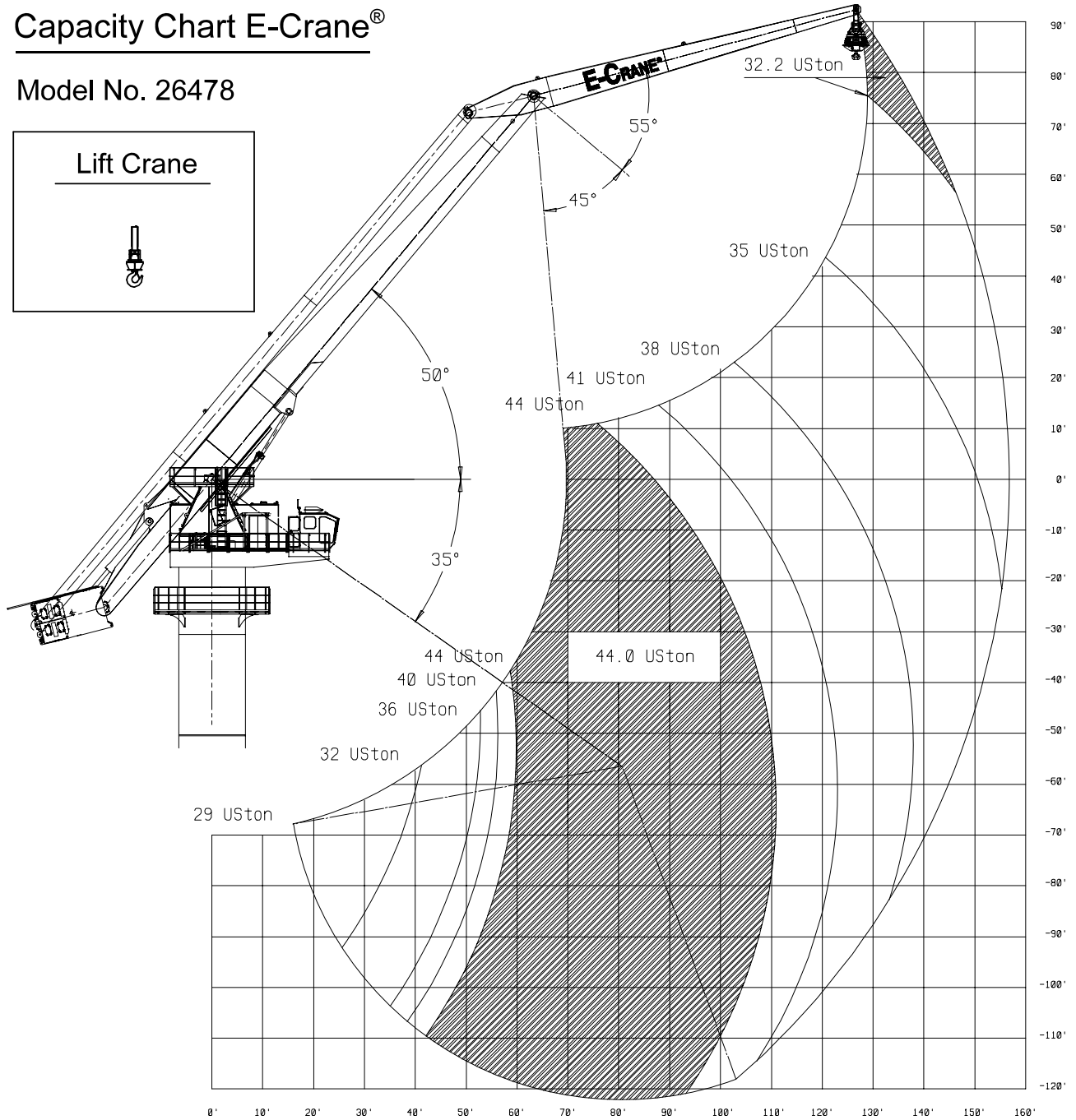
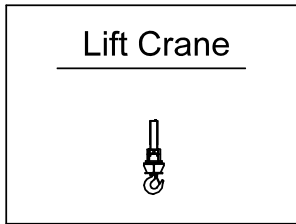
Crane Classification: DIN15018 Teil1, H3B5

**LIFT CRANE OPERATION**

**Load Chart (USton/ft)**

**Capacity Chart E-Crane<sup>®</sup>**

Model No. 26478

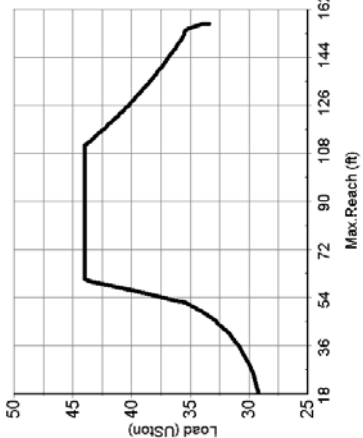


Dwg.: ALI2010-009

Crane Classification: DIN15018 Teil1, H3B4

**CAPACITY CHART (USton) / Lift Crane Operation  
E-crane 26478**

HEIGHT Relative to BOOM- PIN (ft)	REACH (ft)																								
	18	24	30	36	42	48	54	60	66	72	78	84	90	96	102	108	114	120	126	132	138	144	150	156	
84	32,18																								
78	32,18																								
72	32,19 32,18																								
66	32,29 32,19																								
60	32,48 32,29 32,18																								
54	33,30 32,86 32,48 32,26																								
48	33,85 33,30 32,77 32,42																								
42	35,18 34,55 33,85 33,18 32,69 32,33																								
36	35,54 35,41 34,55 33,70 33,07 32,54																								
30	36,34 35,88 35,57 35,18 34,36 33,56 32,86																								
24	37,29 36,86 36,34 35,88 35,54 34,96 34,01 33,18																								
18	39,20 38,62 37,92 37,29 36,86 36,34 35,77 35,51 34,55 33,70																								
12	41,98 41,21 40,26 39,40 38,62 37,92 37,29 36,72 36,10 35,67 35,18 34,01 33,07																								
6	44,00 44,00 43,40 42,25 41,21 40,04 39,20 38,44 37,76 37,14 36,46 35,88 35,51 34,55 33,42																								
0	44,00 44,00 44,00 43,40 41,98 40,96 40,04 39,00 38,26 37,60 36,86 36,22 35,67 35,18 33,70																								
-6	44,00 44,00 44,00 44,00 43,10 41,72 40,72 39,61 38,81 37,92 37,14 36,46 35,88 35,48 34,01																								
-12	44,00 44,00 44,00 44,00 44,00 42,53 41,46 40,26 39,20 38,44 37,60 36,86 36,10 35,54 34,36																								
-18	44,00 44,00 44,00 44,00 44,00 43,40 41,98 40,72 39,82 38,81 37,92 37,00 36,34 35,57																								
-24	44,00 44,00 44,00 44,00 44,00 44,00 44,00 42,53 41,21 40,26 39,20 38,26 37,29 36,46 35,77																								
-30	44,00 44,00 44,00 44,00 44,00 44,00 44,00 44,00 44,00 43,10 41,72 40,49 39,40 38,44 37,44 36,59 35,77																								
-36	44,00 44,00 44,00 44,00 44,00 44,00 44,00 44,00 44,00 43,71 42,25 40,96 39,82 38,62 37,76 36,72 35,88																								
-42	44,00 44,00 44,00 44,00 44,00 44,00 44,00 44,00 44,00 44,00 44,00 42,53 41,21 40,04 38,81 37,76 36,86 35,88																								
-48	38,76 43,52 44,00 44,00 44,00 44,00 44,00 44,00 44,00 44,00 42,81 41,46 40,26 39,00 37,92 36,86																								
-54	34,73 37,90 43,52 44,00 44,00 44,00 44,00 44,00 44,00 44,00 44,00 43,10 41,72 40,26 39,00 37,92 36,86																								
-60	32,15 32,38 34,38 37,90 43,52 44,00 44,00 44,00 44,00 44,00 44,00 44,00 43,10 41,72 40,26 39,00 37,92 36,72																								
-66	30,23 30,50 31,32 32,88 34,73 38,76 44,00 44,00 44,00 44,00 44,00 44,00 44,00 44,00 43,10 41,72 40,26 39,00 37,76																								
-72	29,41 29,98 30,80 31,93 33,15 35,09 39,64 44,00 44,00 44,00 44,00 44,00 44,00 44,00 44,00 44,00 43,10 41,46 40,04 38,81 37,44																								
-78	30,36 31,14 32,38 34,05 36,26 41,51 44,00 44,00 44,00 44,00 44,00 44,00 44,00 44,00 44,00 44,00 42,81 41,46 39,82 38,44																								
-84	30,80 31,71 33,15 34,73 37,90 42,49 44,00 44,00 44,00 44,00 44,00 44,00 44,00 44,00 44,00 44,00 44,00 44,00 42,53 40,96 39,61 38,09																								
-90	32,38 33,74 35,48 39,64 44,00 44,00 44,00 44,00 44,00 44,00 44,00 44,00 44,00 44,00 44,00 44,00 44,00 44,00 44,00 42,50 40,49 39,00																								
-96	33,15 34,73 37,90 41,51 44,00																								
-102	36,26 39,64 44,00																								
-108	42,49 44,00																								
-114	44,00 44,00																								
-120	44,00 44,00																								



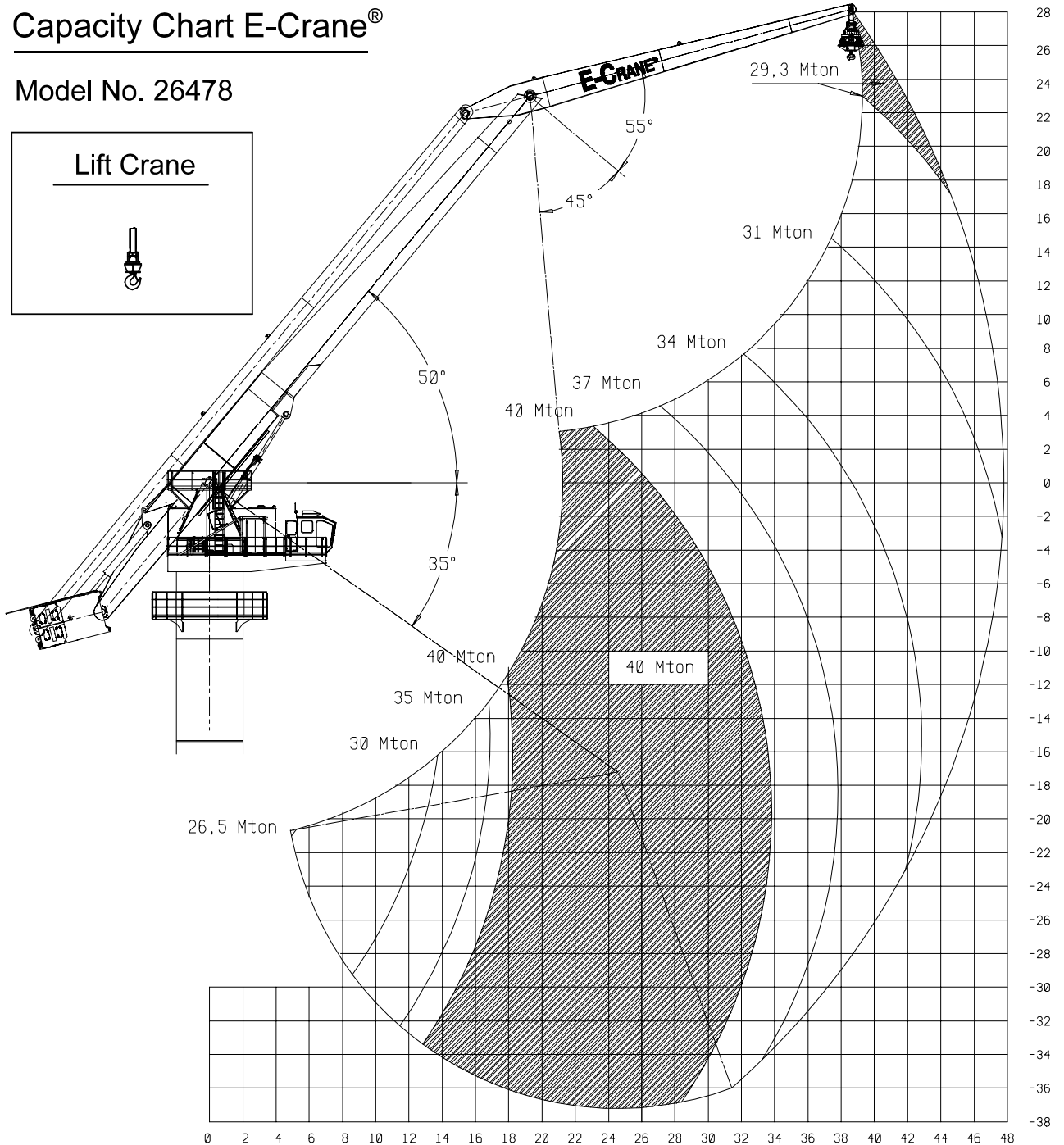
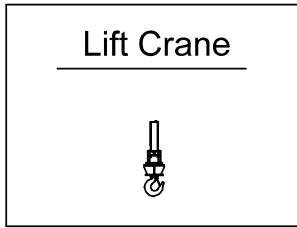
Crane Classification: DIN15018 Teil1, H3B4



**Load Chart (Mton/m)**

**Capacity Chart E-Crane<sup>®</sup>**

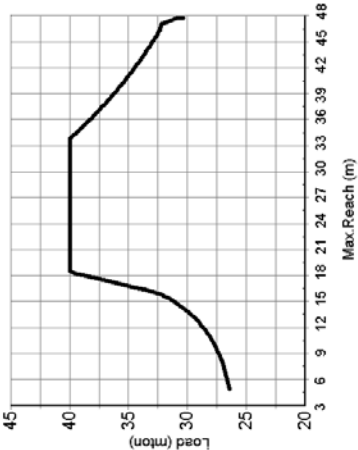
Model No. 26478



Dwg.: ALI2010-008

Crane Classification: DIN15018 Teil1, H3B4

CAPACITY CHART (mton) / Lift Crane Operation E-crane 26478		REACH (m)																				
		7	9	11	13	15	17	19	21	23	25	27	29	31	33	35	37	39	41	43	45	47
HEIGHT Relative to BOOM- PIN (m)																						
24																			29,26			
22																			29,26			
20																			29,30	29,26		
18																			29,80	29,48	29,28	
16																			30,16	29,80	29,48	29,27
14																			30,78	30,27	29,72	29,39
12																			32,19	31,41	30,78	30,16
10																			32,82	32,43	32,26	31,41
8																			33,76	33,26	32,82	32,34
6																			34,94	34,32	33,76	33,26
4																			37,46	36,40	35,63	34,94
2																			40,00	39,73	38,41	37,46
0																			40,00	40,00	39,73	38,41
-2																			40,00	40,00	40,00	39,46
-4																			40,00	40,00	40,00	40,00
-6																			40,00	40,00	40,00	40,00
-8																			40,00	40,00	40,00	40,00
-10																			40,00	40,00	40,00	40,00
-12																			40,00	40,00	40,00	40,00
-14																			40,00	40,00	40,00	40,00
-16																			40,00	40,00	40,00	40,00
-18																			40,00	40,00	40,00	40,00
-20																			40,00	40,00	40,00	40,00
-22																			40,00	40,00	40,00	40,00
-24																			40,00	40,00	40,00	40,00
-26																			40,00	40,00	40,00	40,00
-28																			40,00	40,00	40,00	40,00
-30																			40,00	40,00	40,00	40,00
-32																			40,00	40,00	40,00	40,00
-34																			40,00	40,00	40,00	40,00
-36																			40,00	40,00	40,00	40,00



Crane Classification: DIN15018 Teil1, H3B4

## SPECIFICATIONS

	<b>Specifications English (**)</b>	<b>Specifications Metric (**)</b>
<b>Operating Range:</b>		
Minimum Outreach Range (from centerline of rotation)	16'-1/16"	4,878 m
Maximum Outreach (from centerline of rotation)	156'-9.1/8"	47,781 m
Downreach Range (below main boom pivot point)	122'-7/8"	37,207 m
Lifting Range (vertical lift)	214'-5.7/16"	65,365 m
Boom Operating Angles (above and below horizontal)	+50°/-35°	+50°/-35°
Stick Operating Angles (before and after vertical)	+55°/-45°	+55°/-45°
Degrees of Rotation	360° continuous	360° continuous
<b>Power:</b>		
Power Supply	3-Phase 480 Volts AC, 60 Hz	3-Phase, 400 Volts AC, 50 Hz
Electrical Motor	800 hp	600 kW
Hydraulic Pump Output		
Implement	380 gpm	1.440 L/min
Swing	121 gpm	458 L/min
Hydraulic System Relief Setting	3,625 psi	25.000 kPa
Hydraulic Tank Refill Capacity	1056 USgal	4.000 L
<b>Dimensions:</b>		
Boom Length	98'-5.1/8"	30,0 m
Stick Length	65'-7.3/8"	20,0 m
<b>Total Weight Superstructure<sup>(*)</sup></b>	884,400 lbs	402.000 kg

(\*) Operating weight does not include lubricants, hydraulic oil, bucket and operator

(\*\*) Materials and specifications are subject to change without notice.  
See your E-Crane<sup>®</sup> dealer for available options.

Alle rechten voorbehouden. Niets uit deze uitgave mag worden veelevoudigd, opgeslagen in een geautomatiseerd gegevensbestand, of openbaar gemaakt, in enige vorm of op enige wijze, hetzij elektronisch, mechanisch, door fotocopieën, opnamen of enige andere manier, zonder voorafgaande schriftelijke toestemming van nv Indusign (België).

All rights reserved. No part of this publication may be reproduced, stored in a retrieval system, or transmitted, in any form or by any means, electronic, mechanical, photocopying, recording or otherwise without the written permission of nv Indusign (Belgium).

Alle Rechte vorbehalten. Nachdruck, Aufnahme in ein Retrieval-System, jedwede elektronische, mechanische, fotokopierte, oder andere Übertragung, auch auszugsweise, ist ohne ausdrücklicher, schriftlicher Genehmigung von nv Indusign (Belgien) verboten.  
Ce manuel ne peut en aucune façon être copié, sans autorisation écrite de la firme nv Indusign (Belgique).